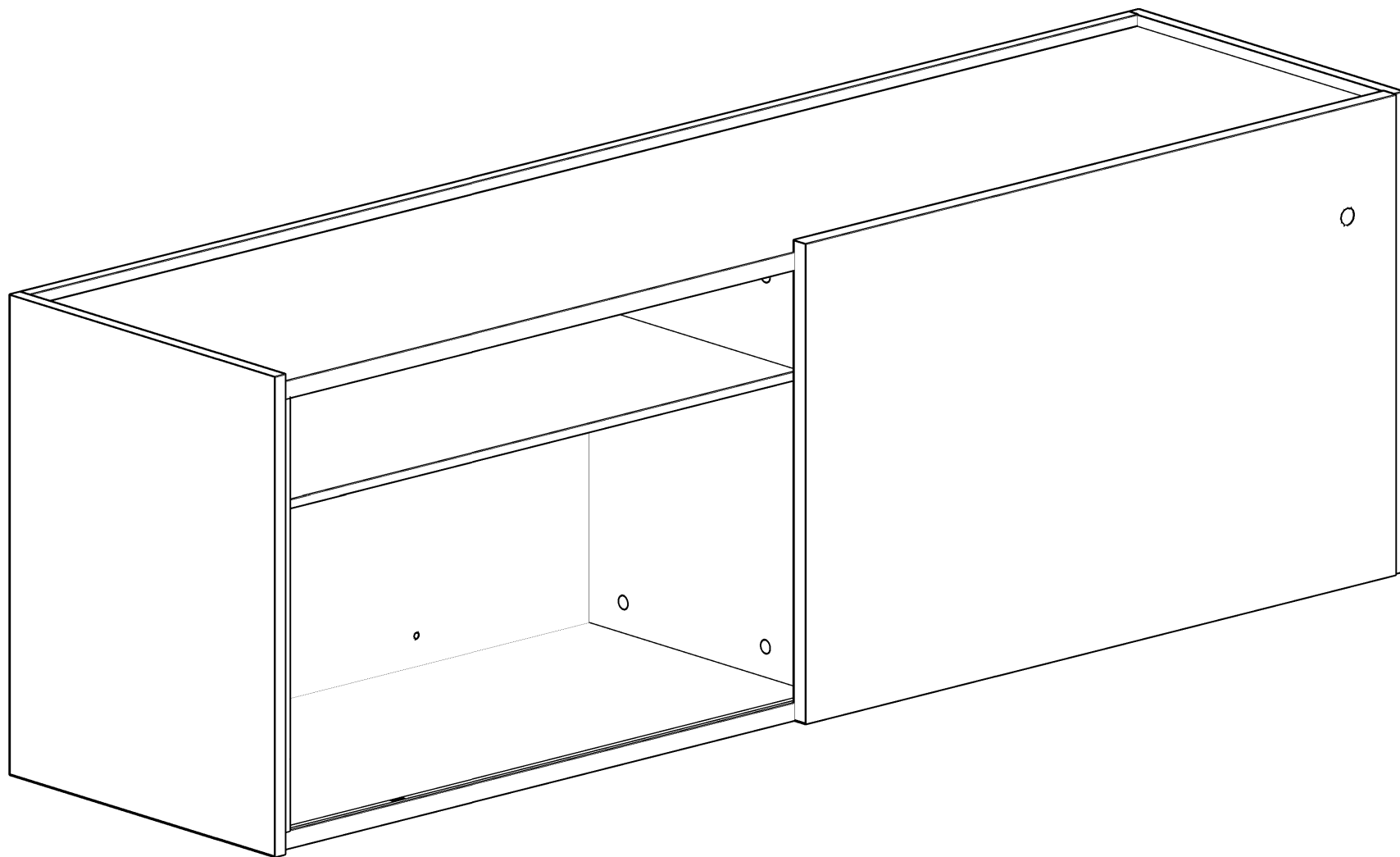
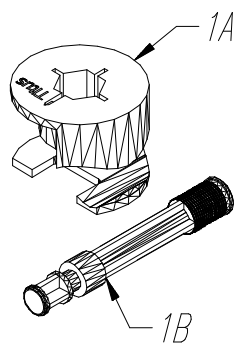


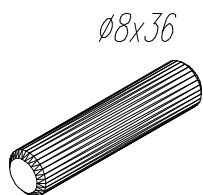
.mdd



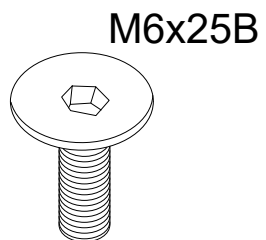
V35M



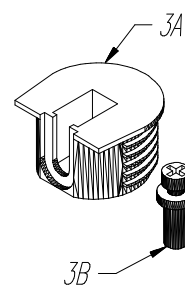
20x



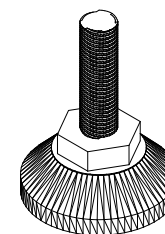
22x



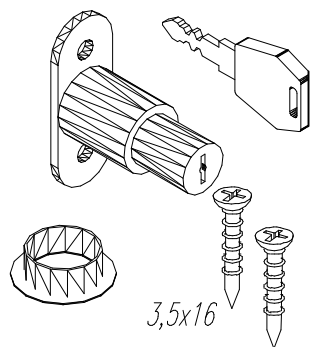
16x



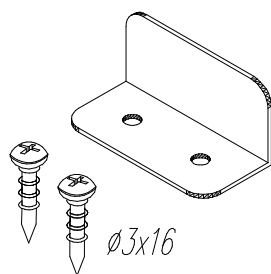
8x



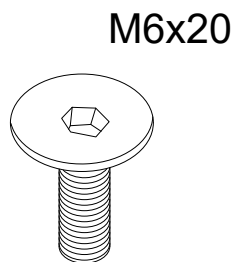
6x



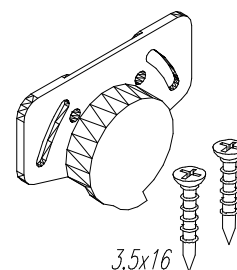
1x



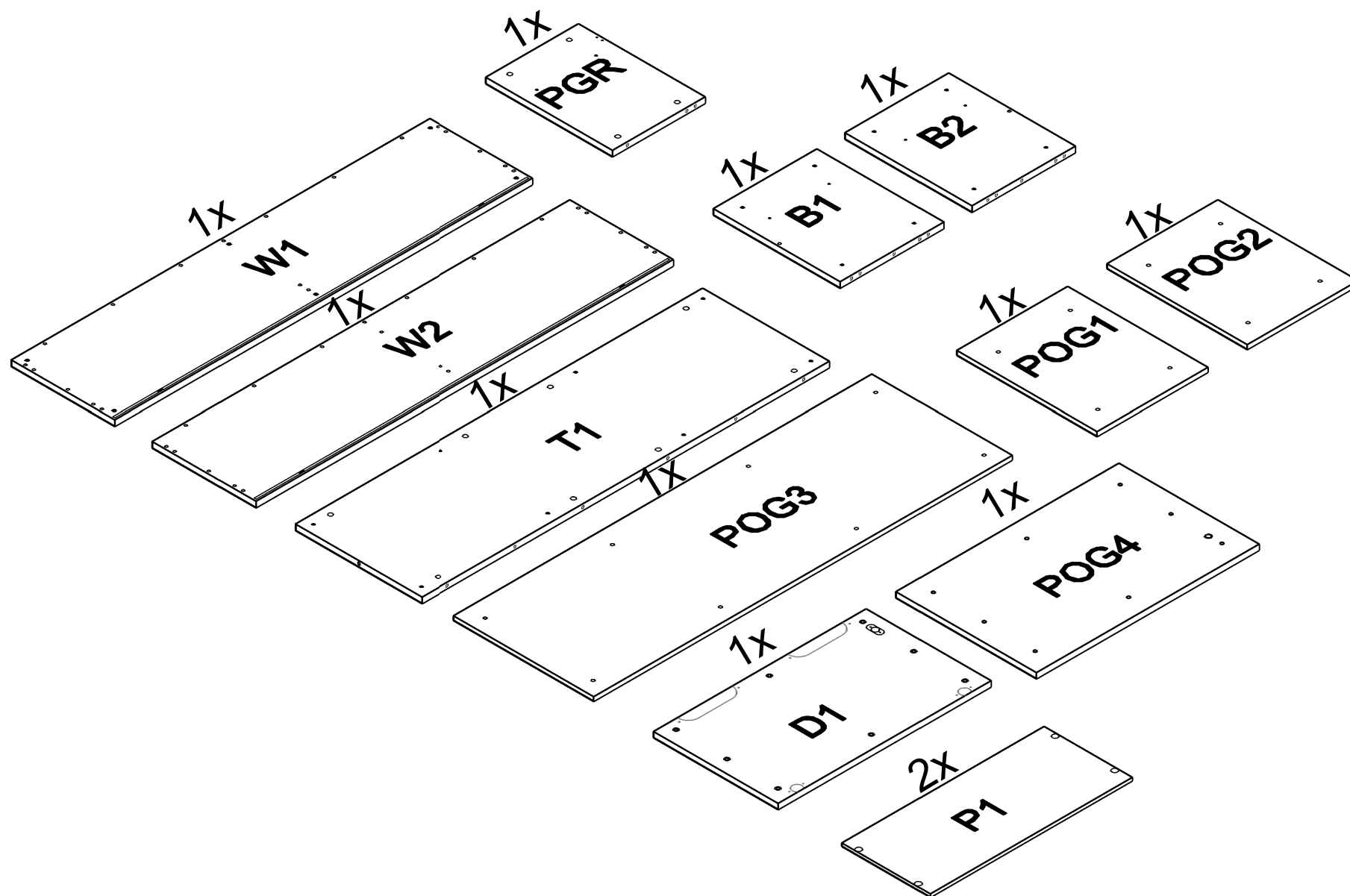
1x



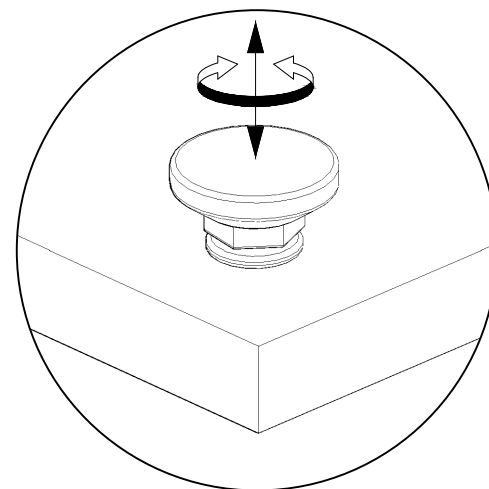
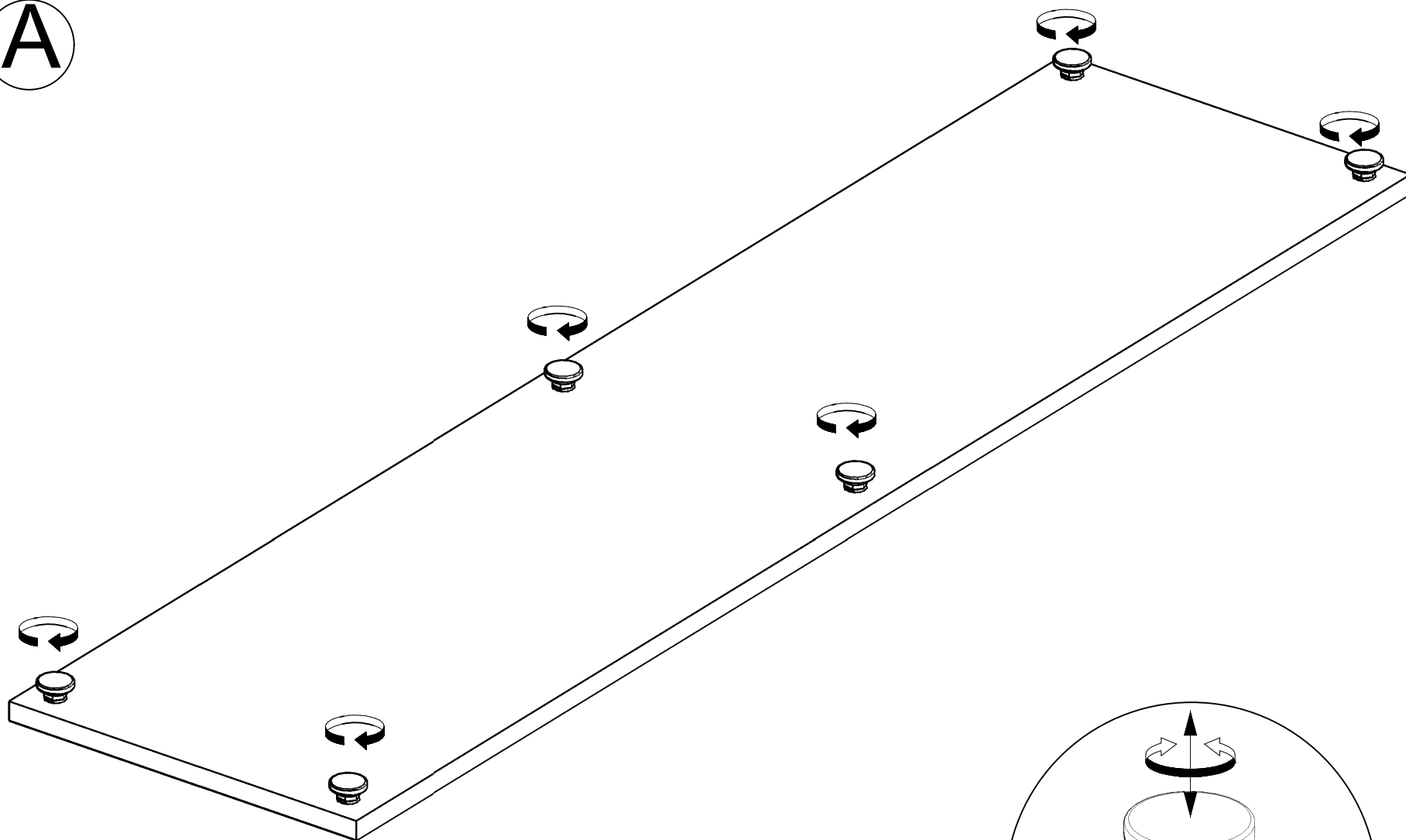
16x



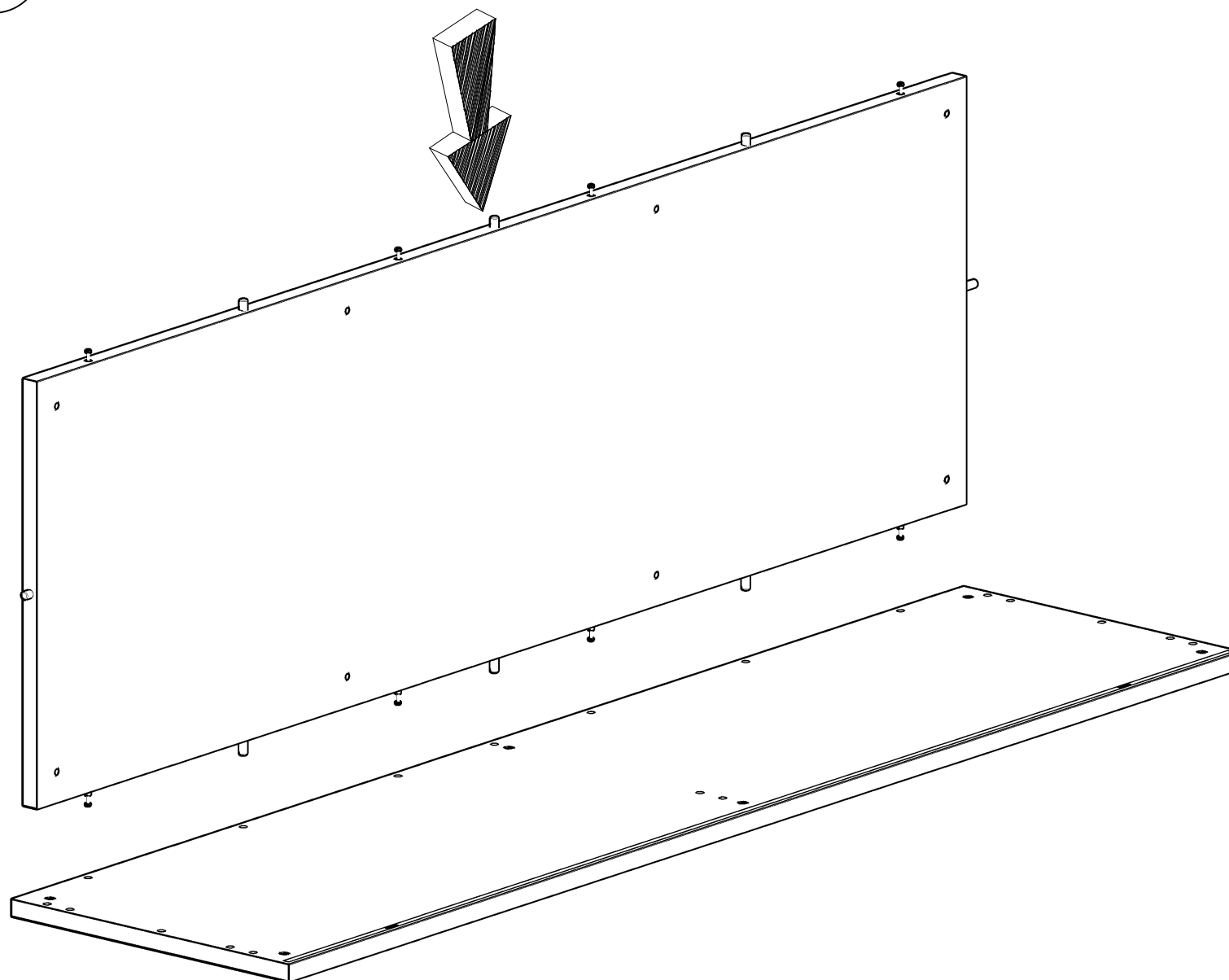
2x



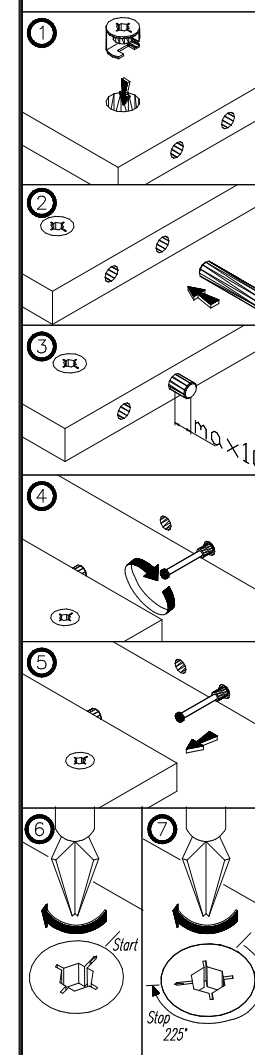
A



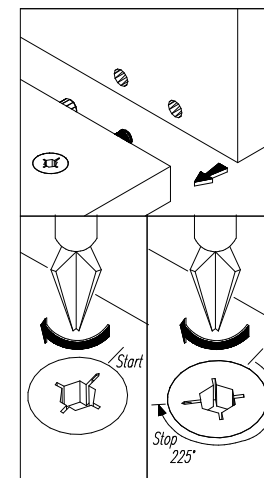
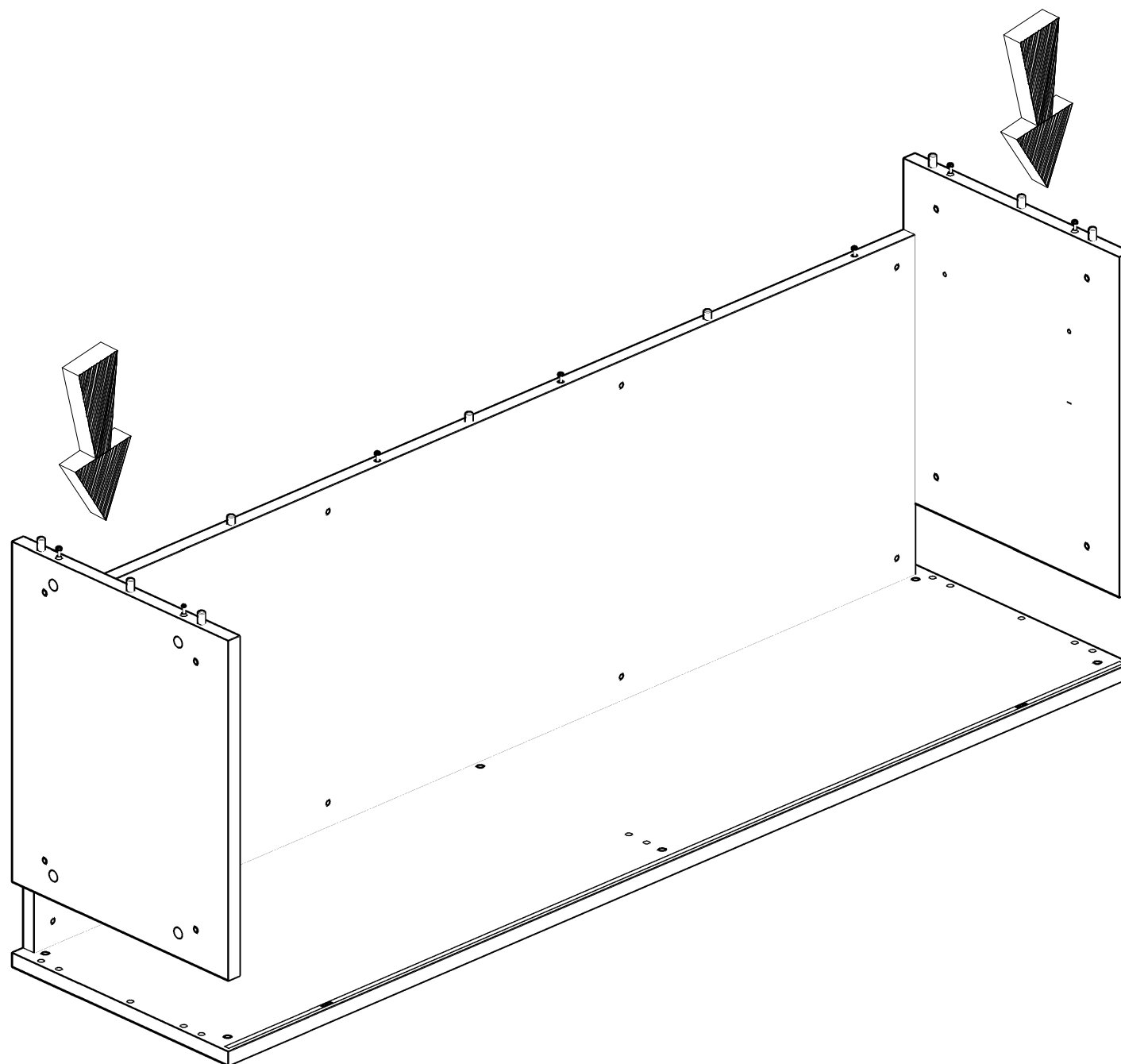
B



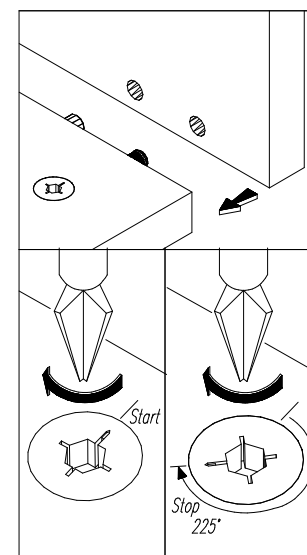
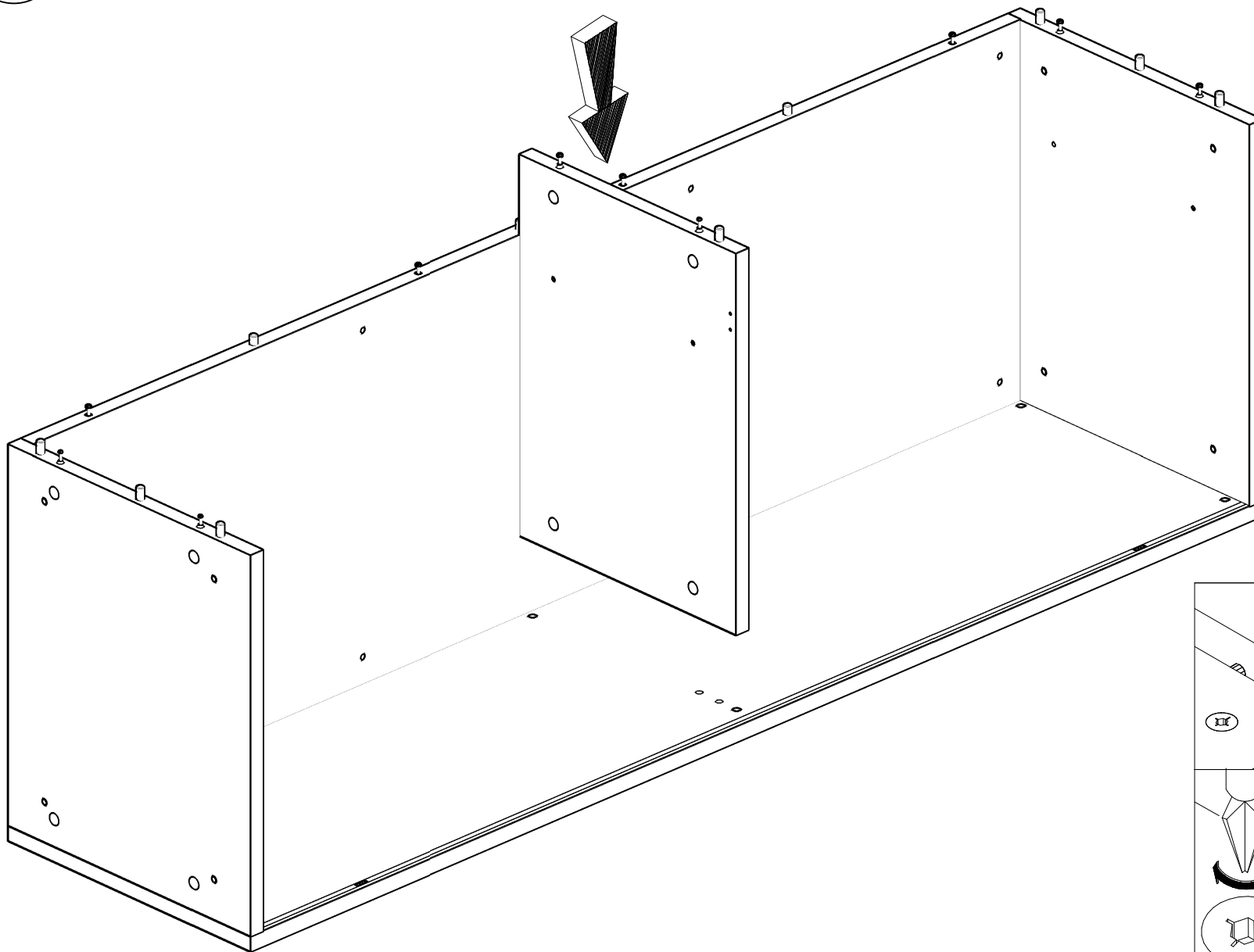
KOLEJNOŚĆ MONTAŻU
MIMOSRODÓW I KOŁKÓW.
THE FITTINGS SEQUENCE OF THE
CAMS AND DOWELS.
DIE MONTAGEABFOLGE VON
EXZENTERN UND DÜBELN.



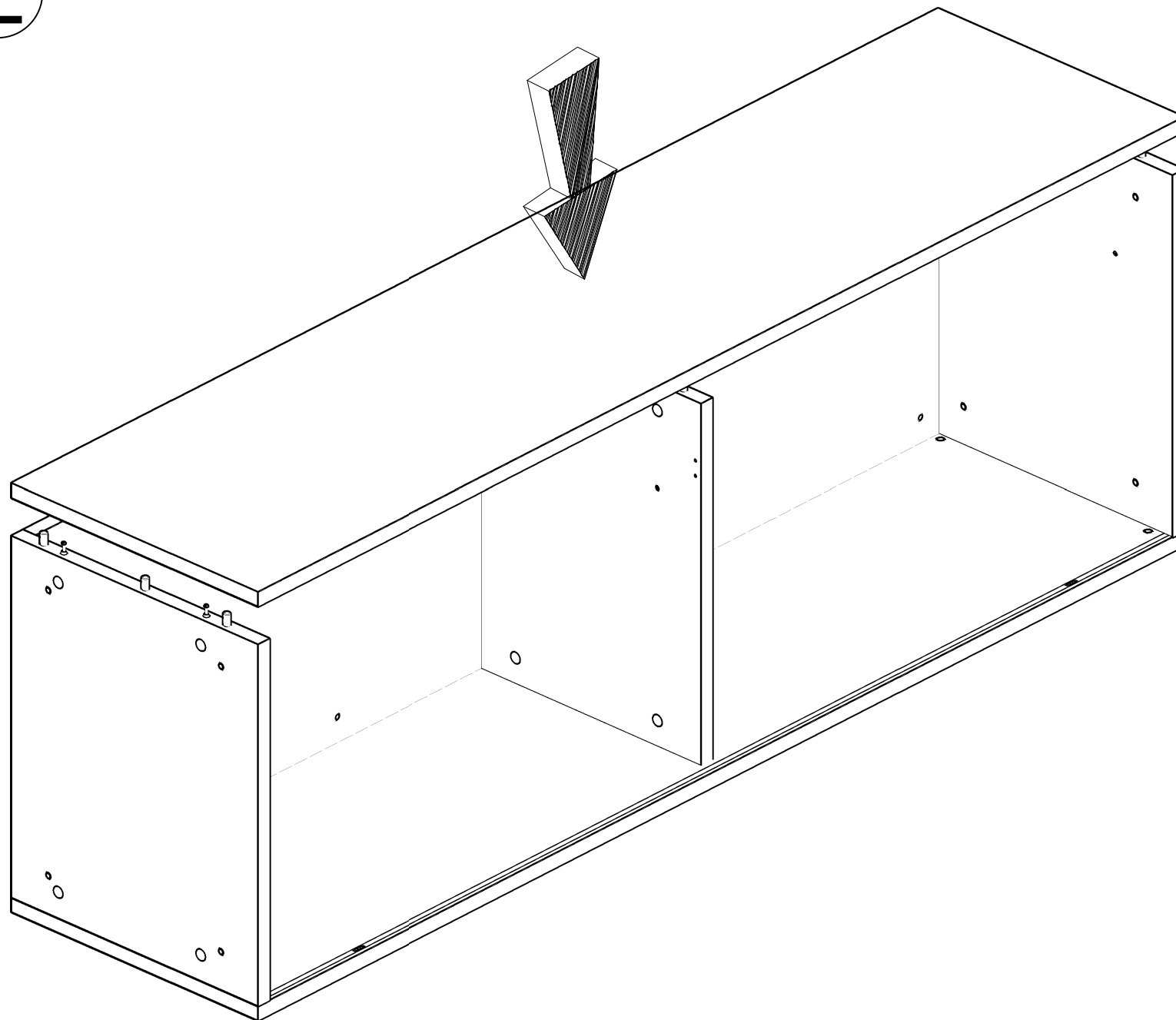
C



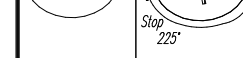
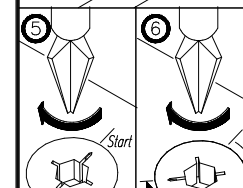
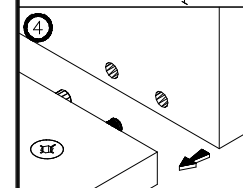
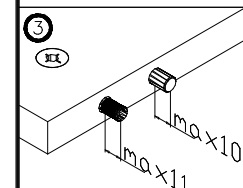
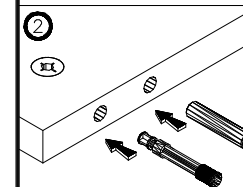
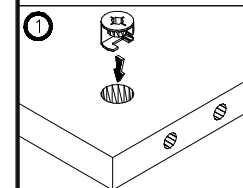
D



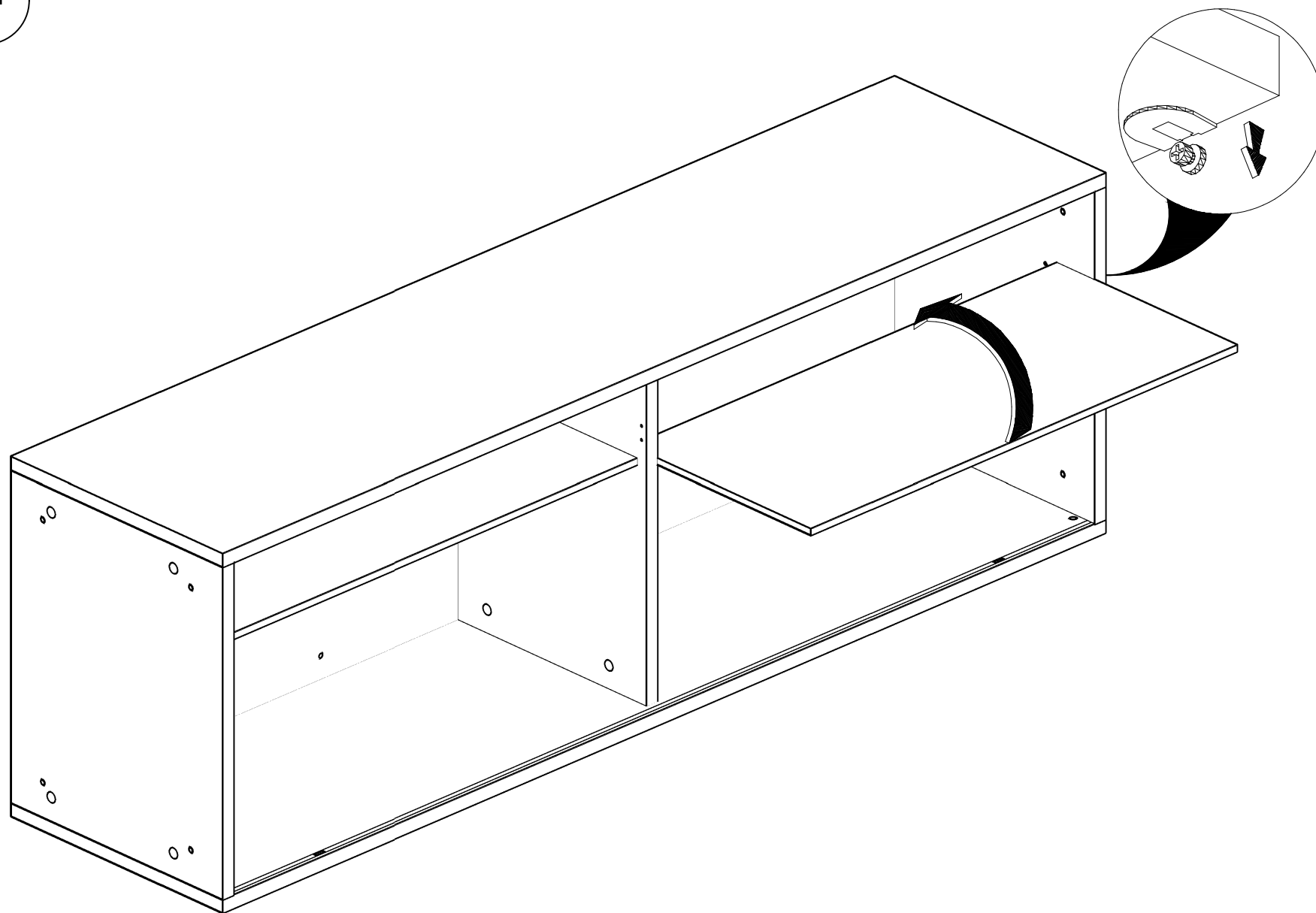
E



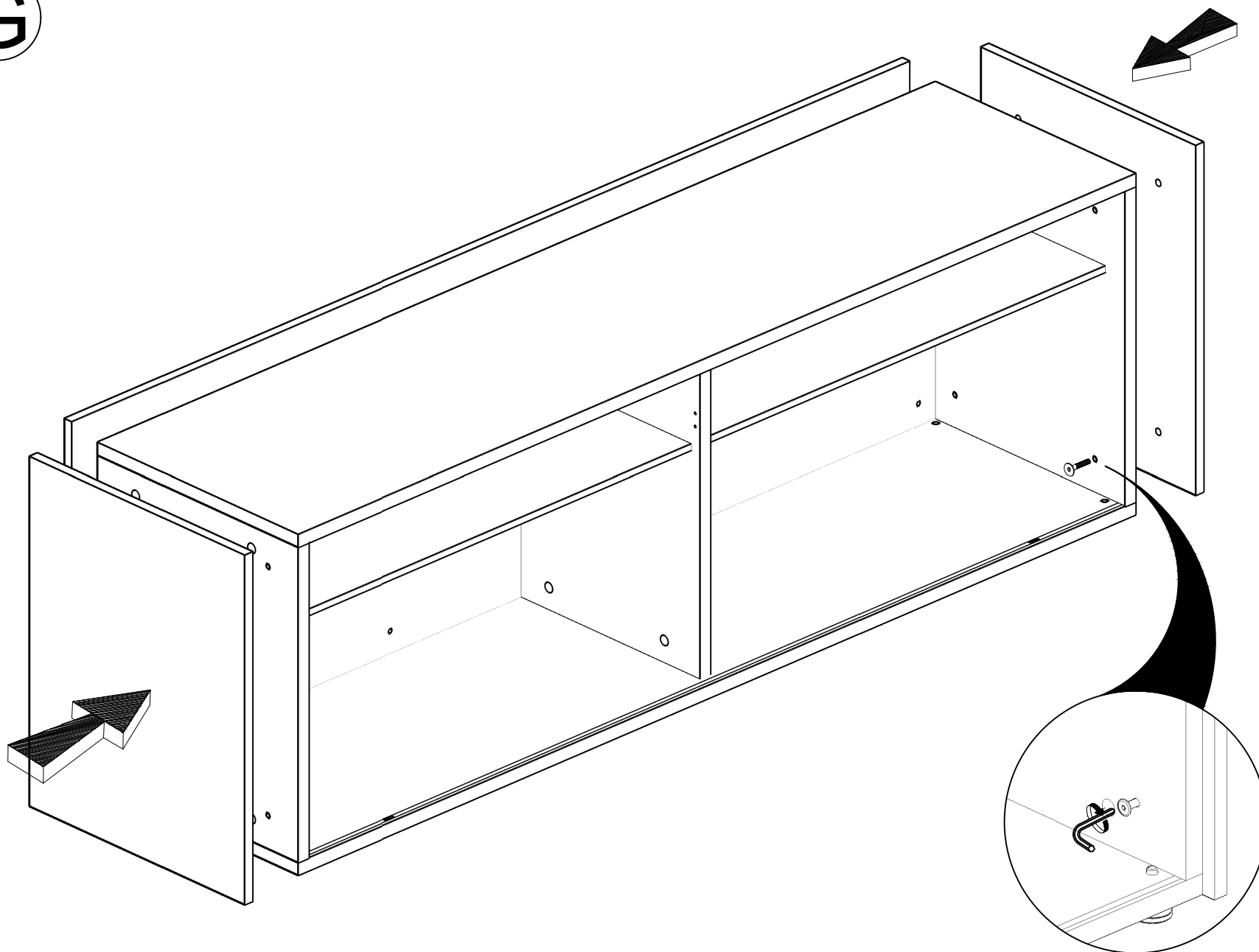
KOLEJNOŚĆ MONTAŻU
MIMOŚRODÓW I KOŁKÓW.
THE FITTINGS SEQUENCE OF THE
CAMs AND DOWELS.
DIE MONTAGEABFOLGE VON
EXZENTERN UND DÜBELN.



F



G



H

