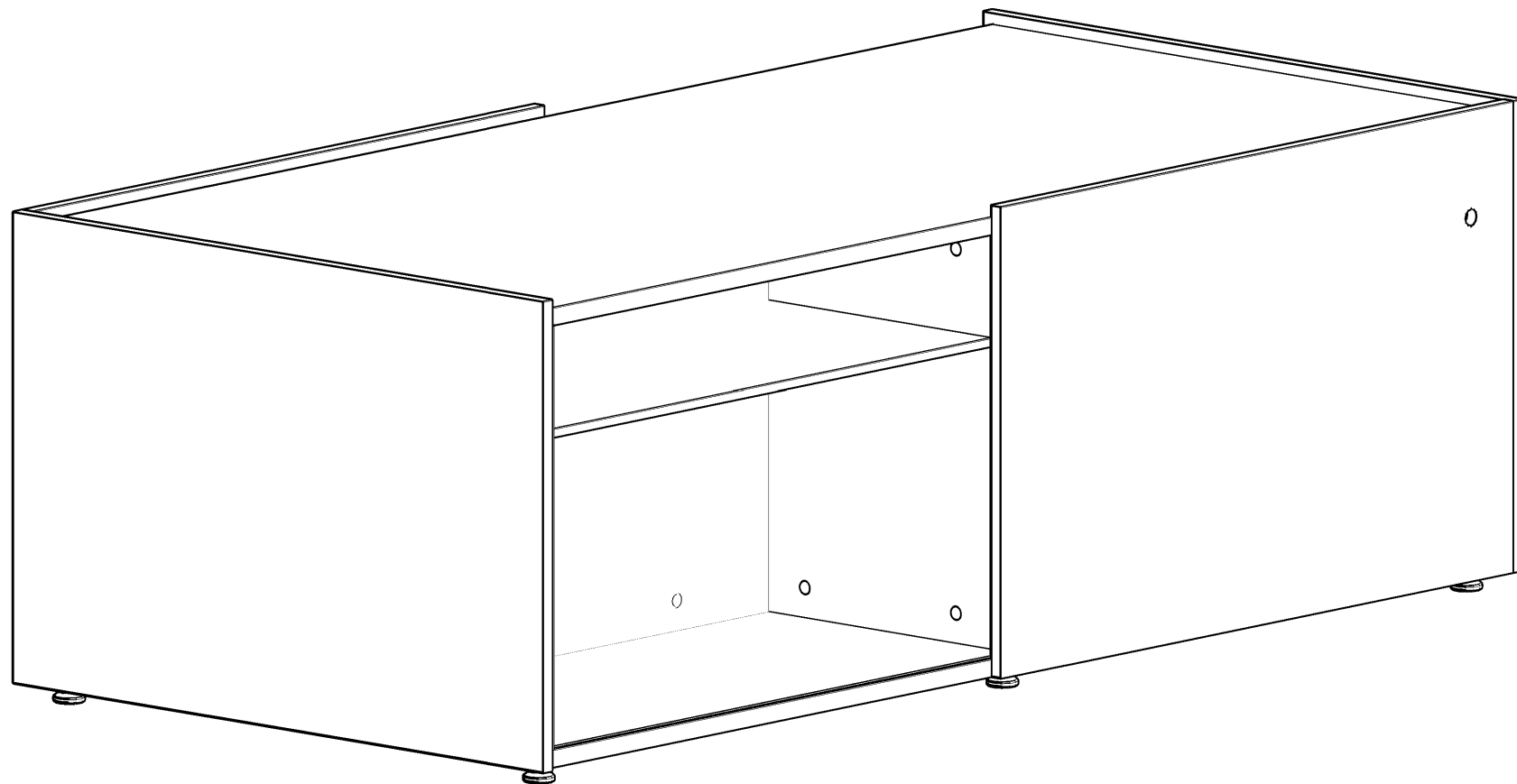
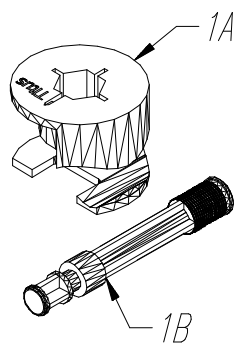


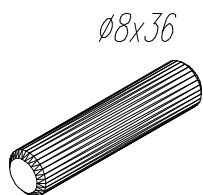
.mdd



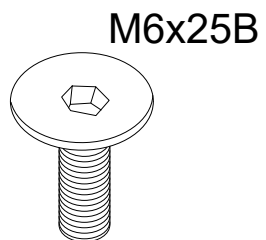
V36M



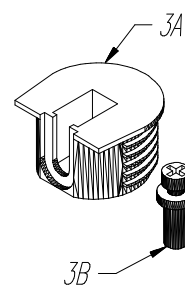
32x



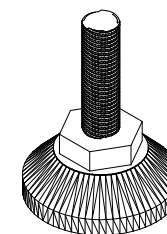
24x



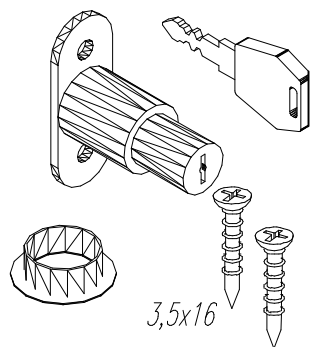
24x



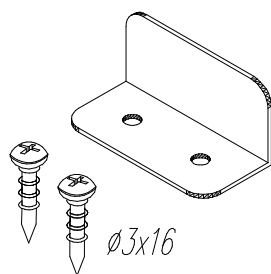
16x



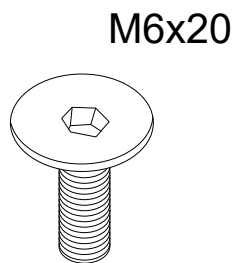
6x



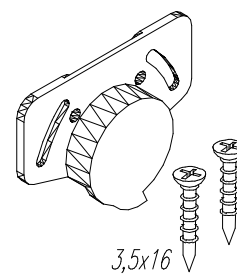
2x



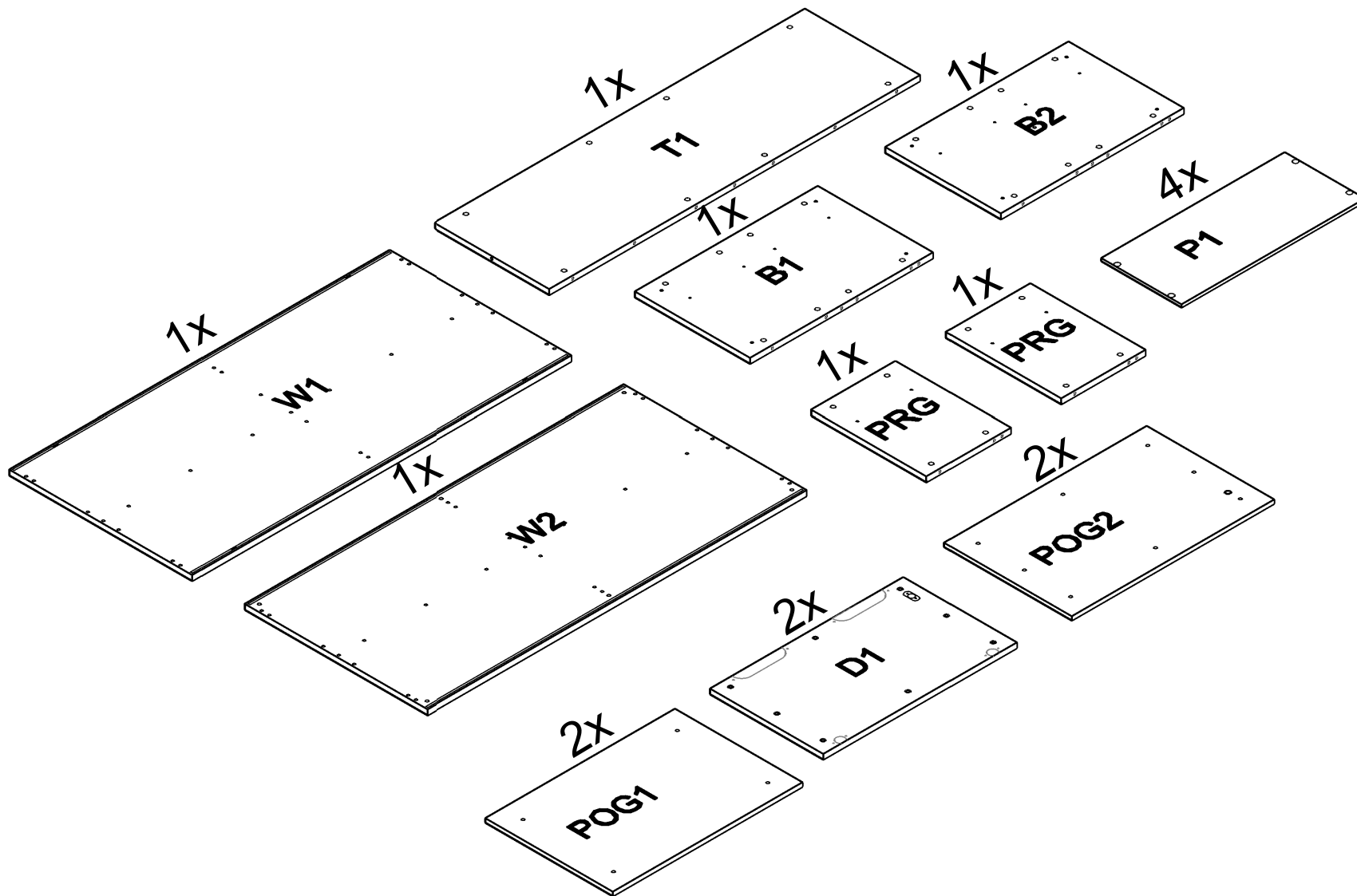
1x



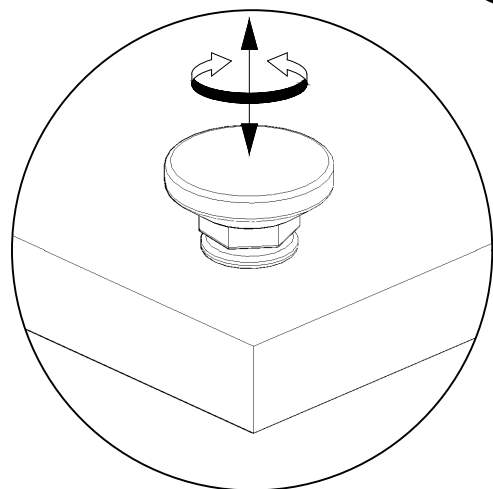
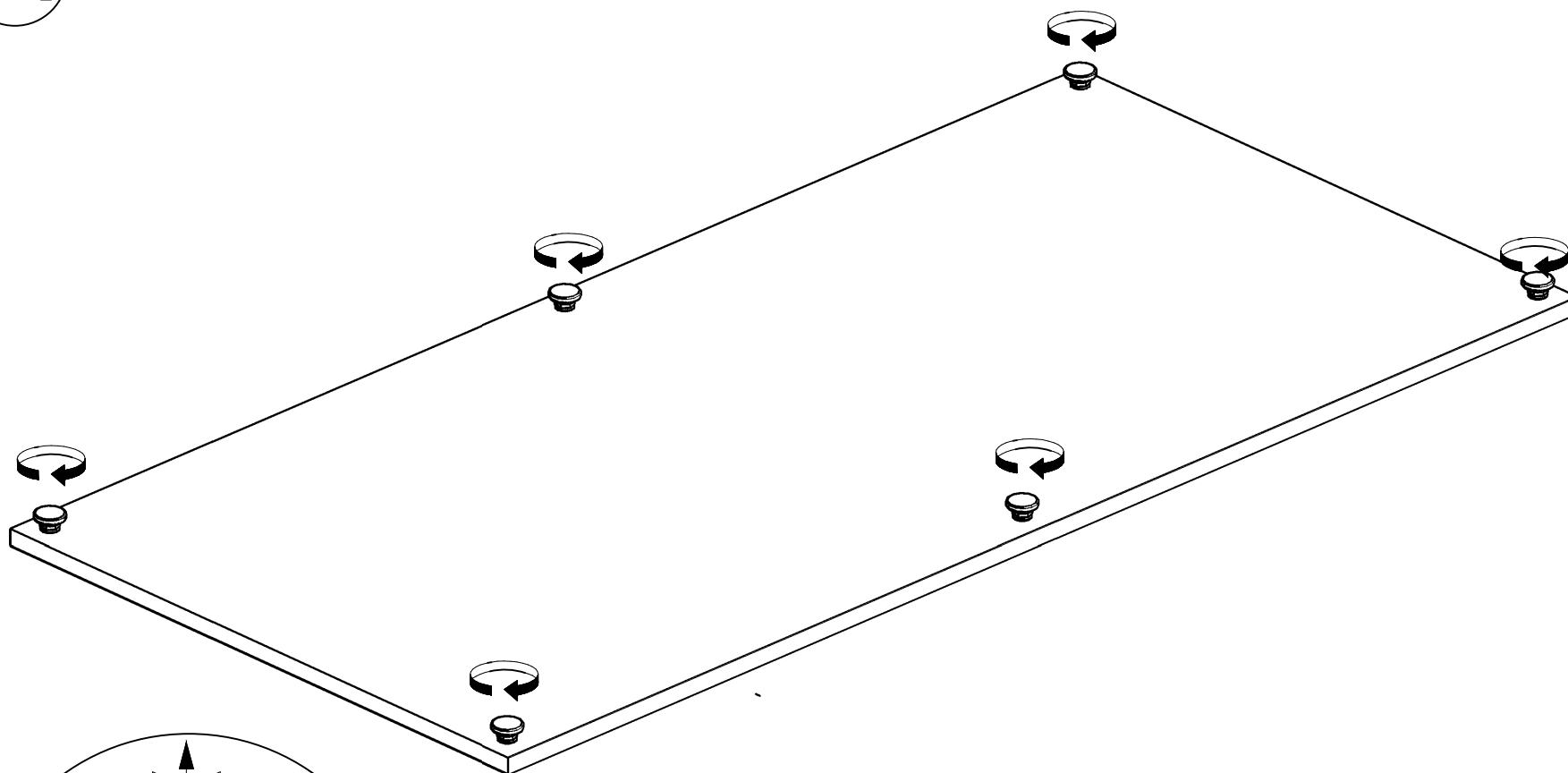
16x



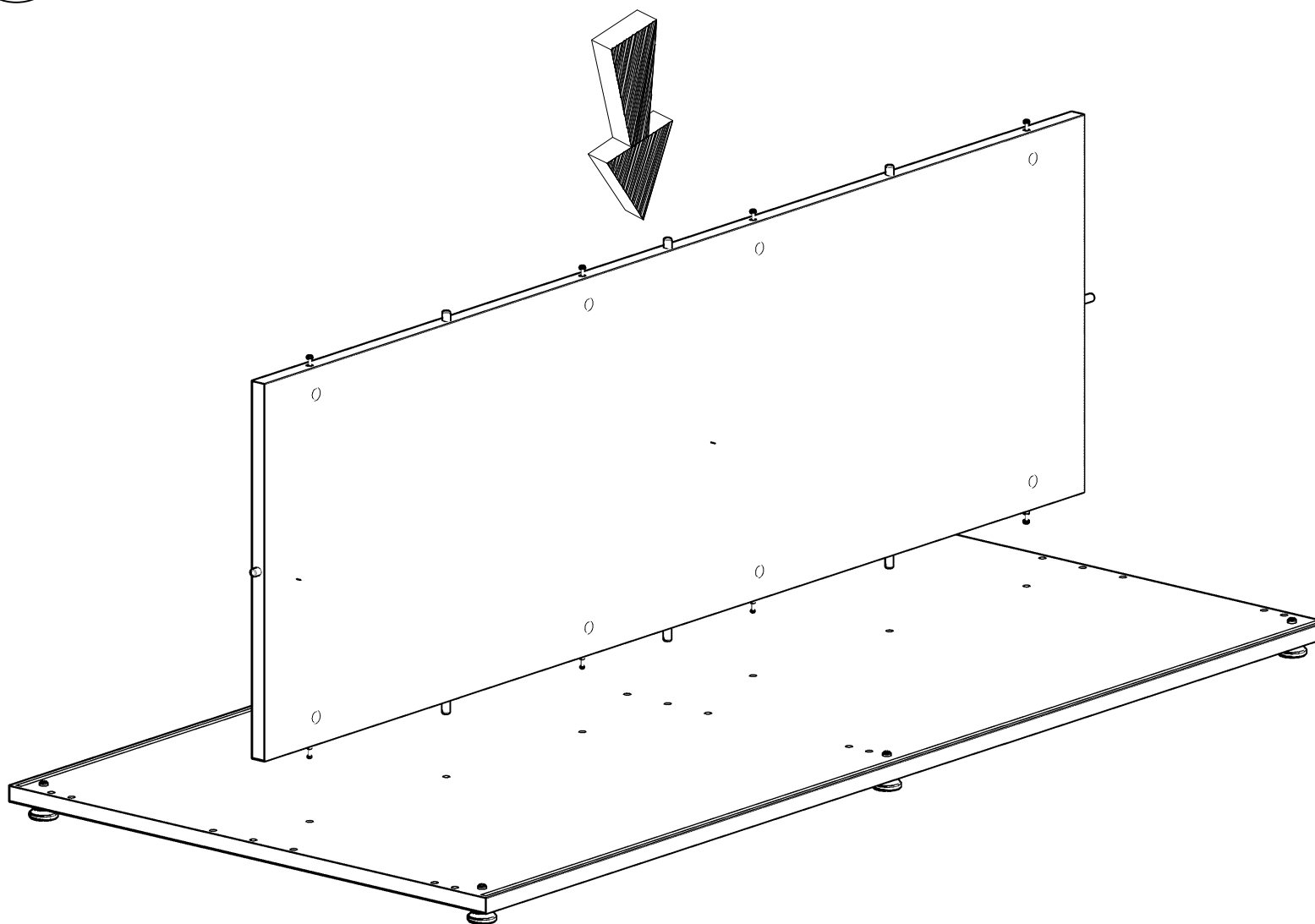
4x



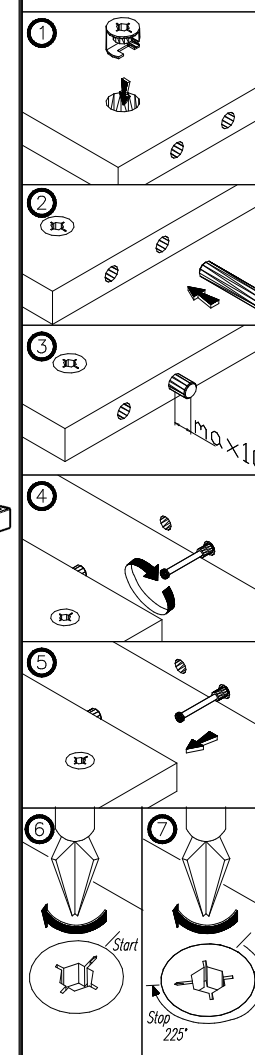
A



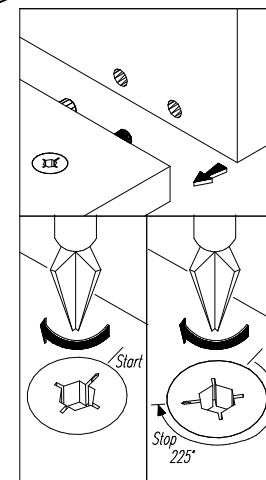
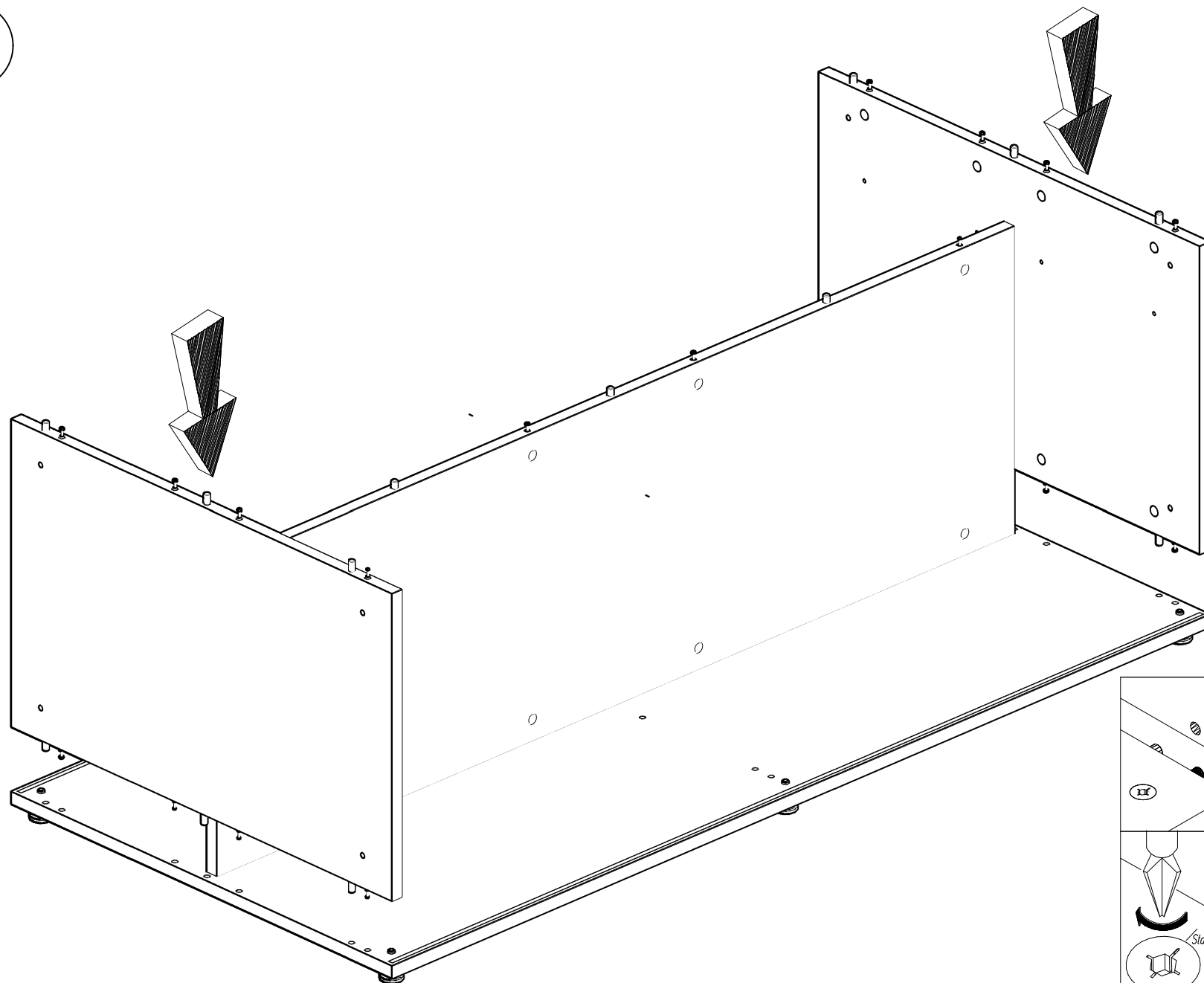
B



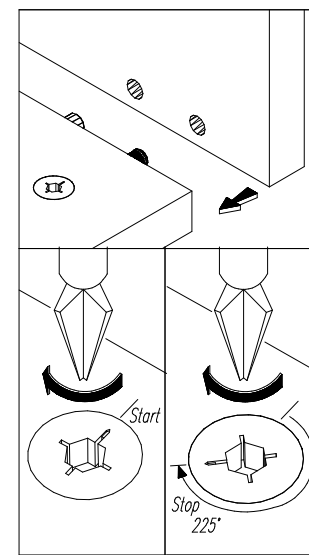
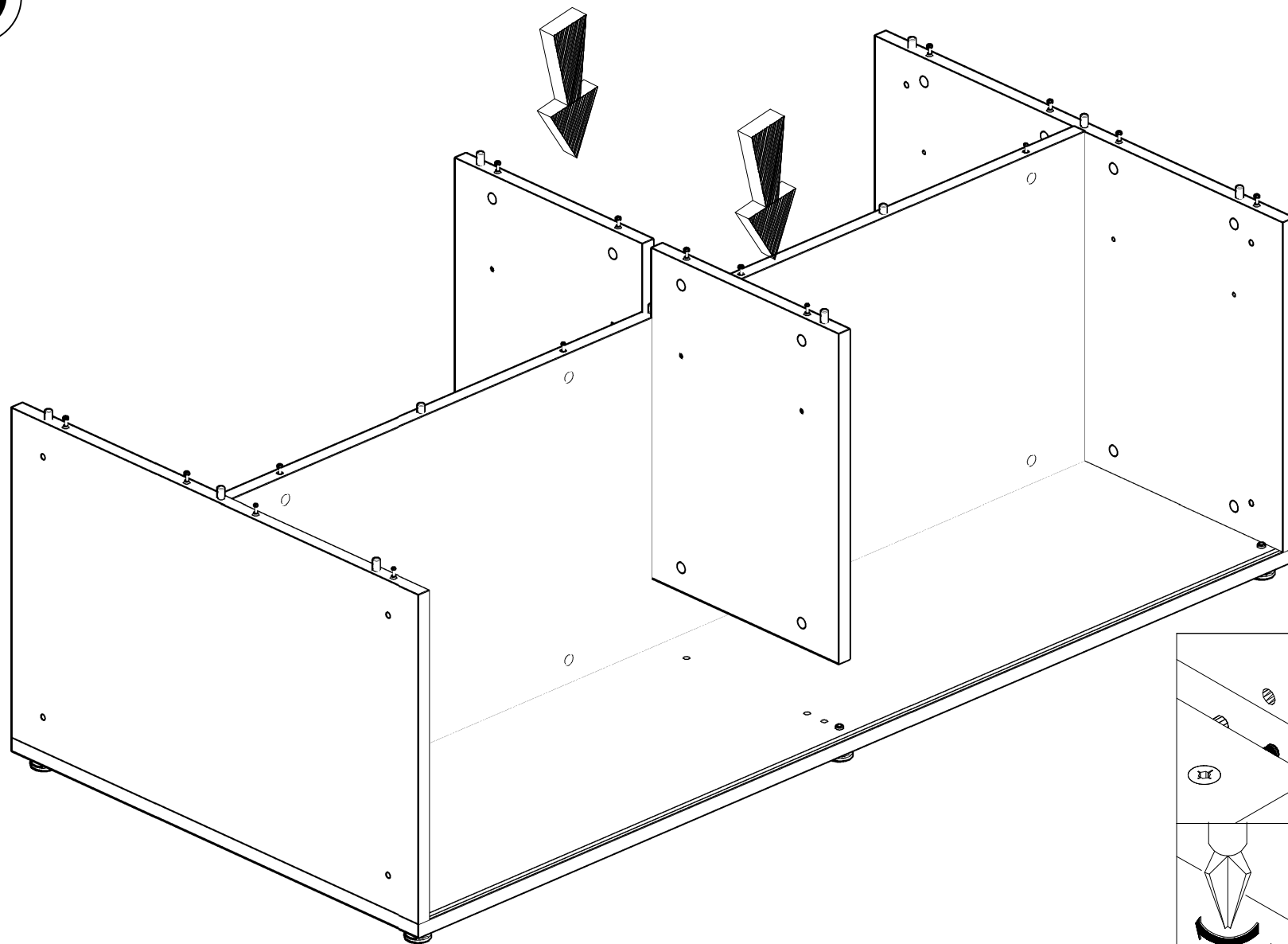
KOLEJNOŚĆ MONTAŻU
MIMOSRODÓW I KOŁKÓW.
THE FITTINGS SEQUENCE OF THE
CAMS AND DOWELS.
DIE MONTAGEABFOLGE VON
EXZENTERN UND DÜBELN.



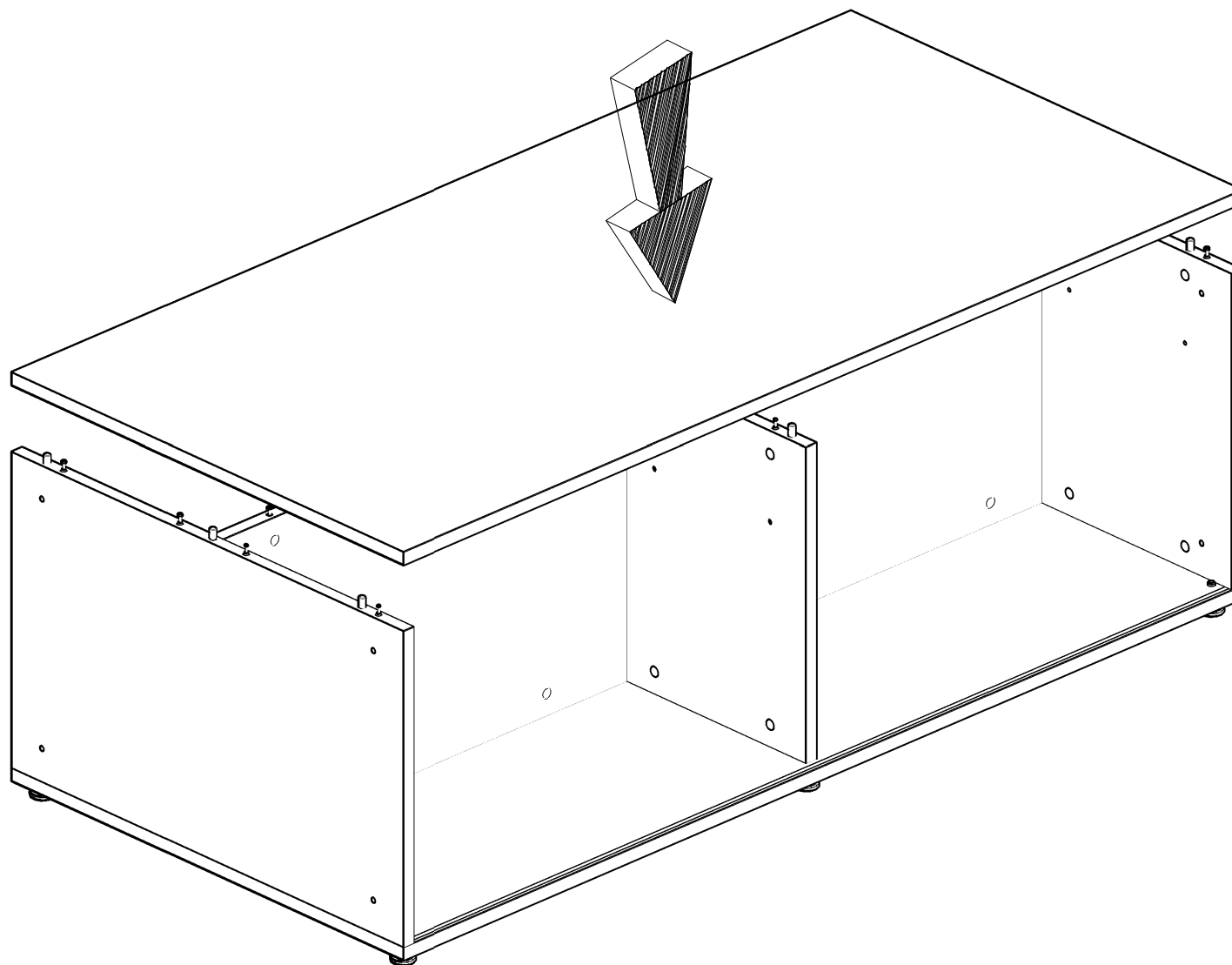
C



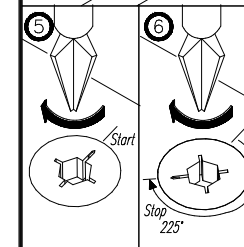
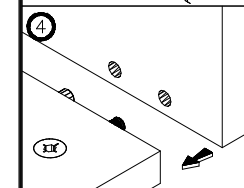
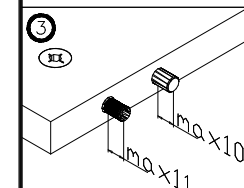
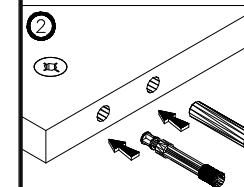
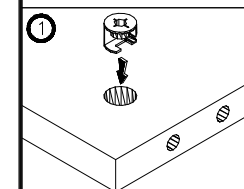
D



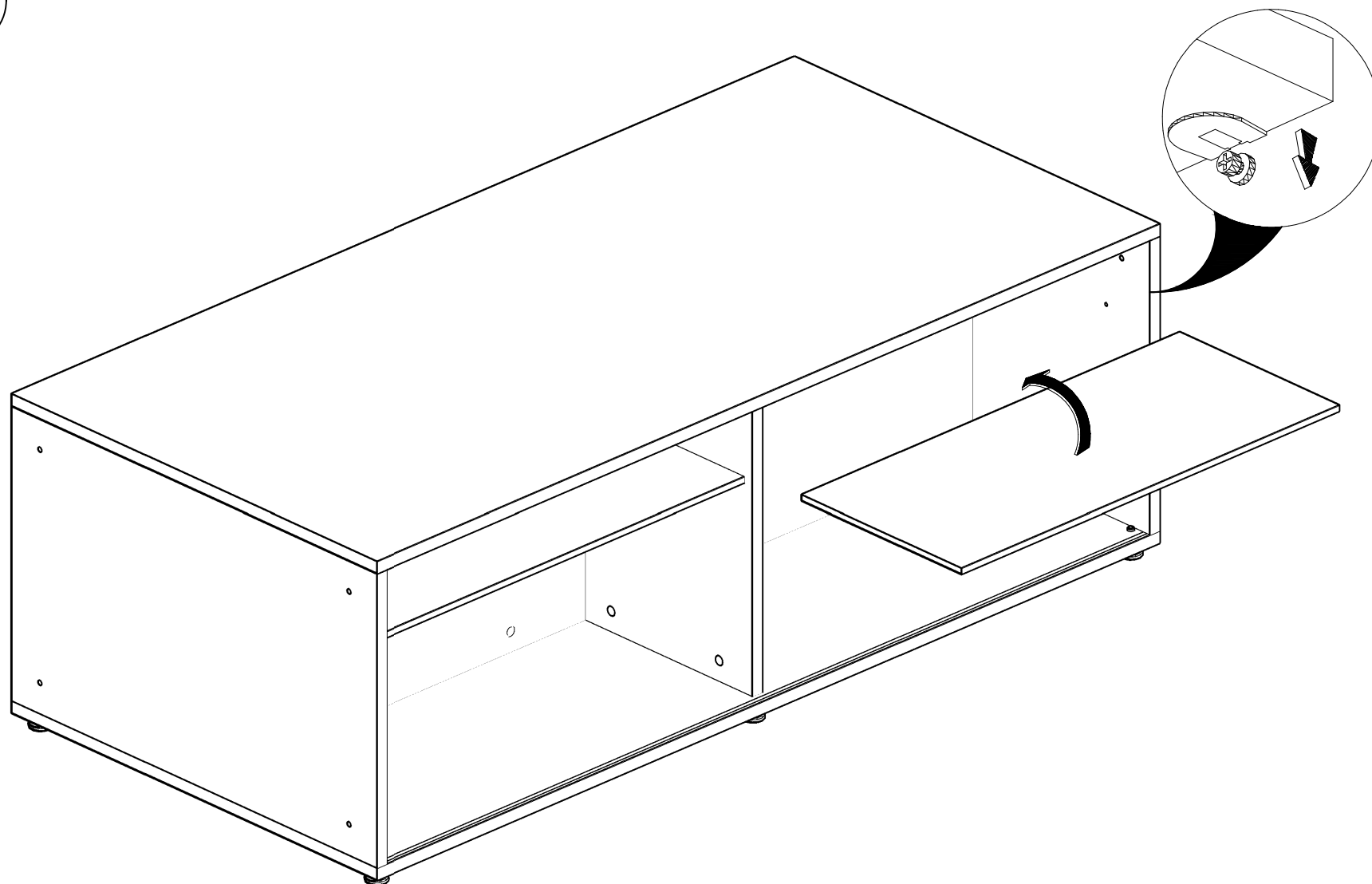
E



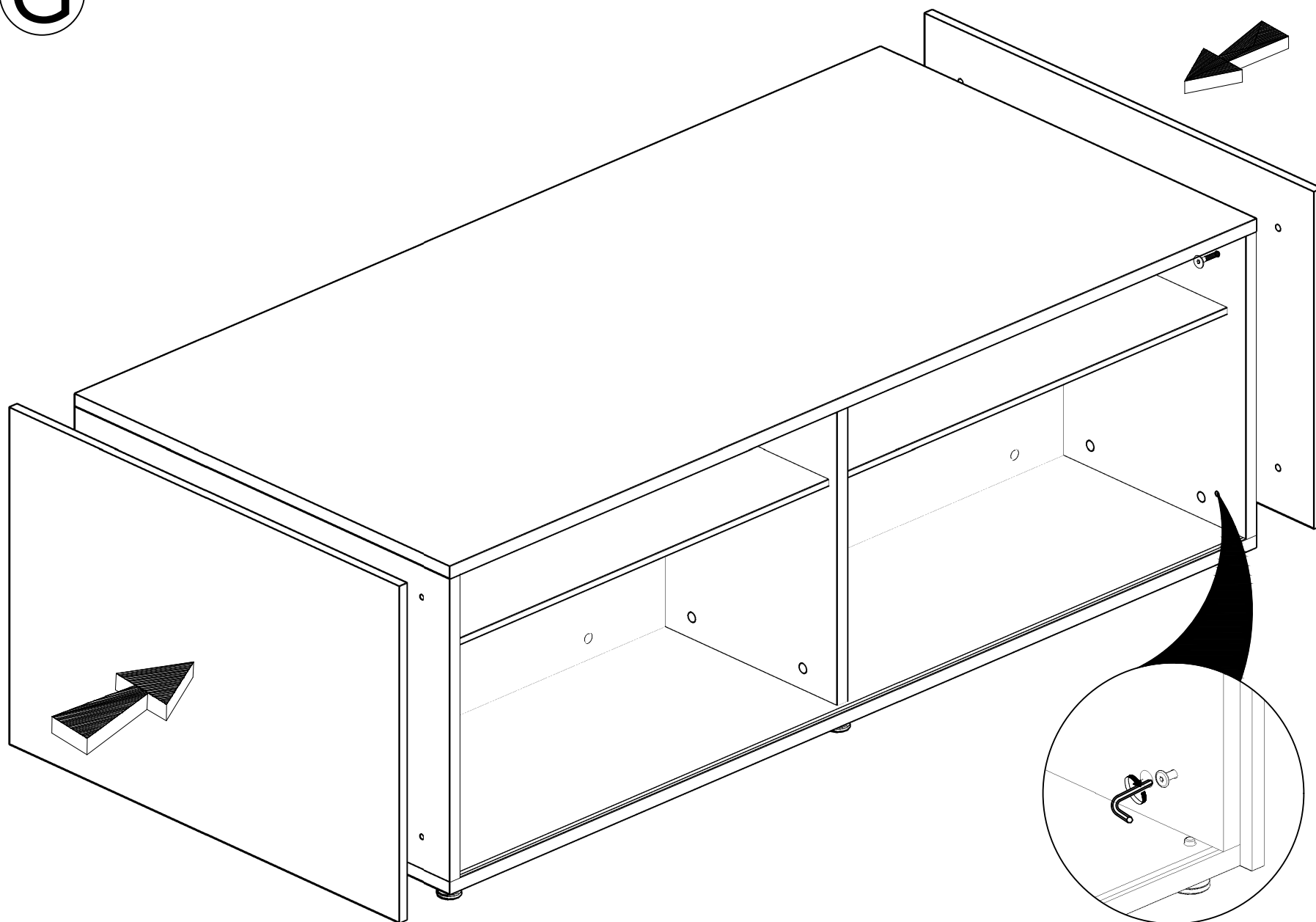
KOLEJNOŚĆ MONTAŻU
MIMOŚRODÓW I KOŁKÓW.
THE FITTINGS SEQUENCE OF THE
CAMS AND DOWELS.
DIE MONTAGEABFOLGE VON
EXZENTERN UND DÜBELN.



F



G



H

