

**SPECIFICATION**

Range: **VOLUMI**  
Design: **Caimi Lab**

Description

Modular system of upholstered sound-absorbing seats with a supporting structure made of wooden material and elastic belts, dimensioned so as to independently absorb low frequencies and covered with sound-absorbing polyurethanes and polyester, which, combined with the upholstery in sound-absorbing Snowsound Fiber fabric made of polyester fibres, allows the seat to absorb the different frequencies in the best possible way. The outer fabric cover is removable. The seats are available with and without a dark grey fabric strip at the base to act as a heel stop and can be joined together using metal fittings.

Meets the strength, durability and safety requirements of **EN 16139:2013+AC:2013 level 1**

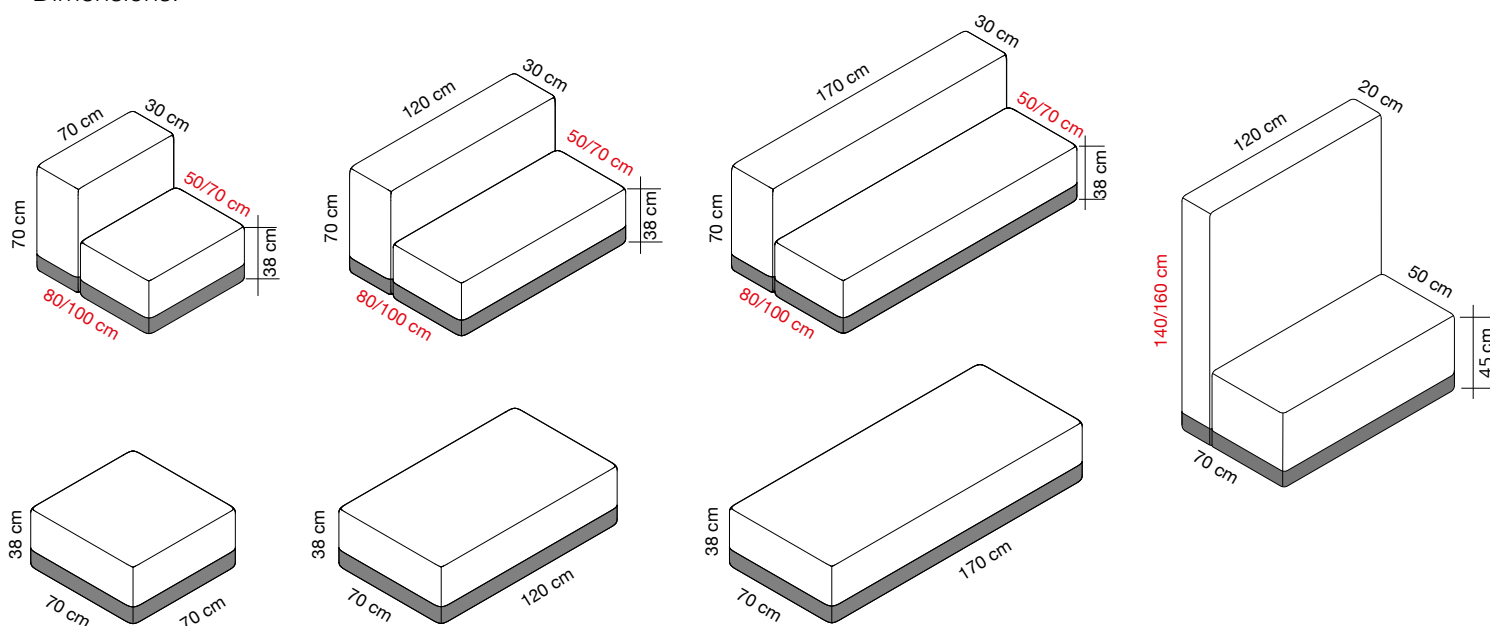
Results obtained in tests according to the standards:

- EN 16139 prot.n. 332120-/332454-1/2022
- EN 16139 prot.n. 332120-/332454-2/2022
- EN 1728 prot.n. 332120-/332454-3/2022
- EN 1728 prot.n. 332120-/332454-4/2022
- EN 1728 prot.n. 332120-/332454-5/2022
- EN 1728 prot.n. 332120-/332454-6/2022
- EN 1728 prot.n. 332120-/332454-7/2022
- EN 1728 prot.n. 332120-/332454-8/2022
- EN 1728 prot.n. 332120-/332454-9/2022
- EN 1022 prot.n. 332120-/332454-10/2022

**FIRE REACTION CLASS**

Seat fire reaction, Class 1IM according to UNI 9175 and UNI 9175/FA1

Dimensions:



## Characteristics of the external fabric FIBER 3 MELANGE

**Composition:** acoustic fibers 100% polyester. No detectable formaldehyde contents.

**Weight:** 340 (g/m<sup>2</sup>) - 476 (g/linear meter)

### REACTION TO FIRE

**Italian Class : Class1.** Test executed according to UNI 8456 and UNI 9174

**Euroclass: B-s1, d0.** Reaction to fire classification according to UNI EN 13501-1, executed following UNI EN ISO 11925-2 and UNI EN 13823

**French Class : ClassM1.** Test executed according to NF P 92-503 (1995) / NF P 92-504 (1995) and NF P 92-505 (1995)

Exyernal fabric is **Greenguard Gold certified**, validating its low VOC emission characteristics and its contribution to indoor environmental quality.

### ABRASION RESISTANCE OF FABRICS - MARTINDALE MACHINE METHOD

**50.000 rubs**

Test executed according to UNI EN ISO 12947-2:2000

### DETERMINATIONS OF FABRIC PROPENSITY TO SURFACE FUZZING AND TO PILLING

**CLASS 5 (5.000 rubs)**

Test executed according to UNI EN ISO 12945-2:2002

### COLOUR FASTNESS TO ARTIFICIAL LIGHT: Xenon arc fading lamp test (BLUE SCALE)

**FASTNESS INDEX: 7**

Test executed according to UNI EN ISO 105-B02:2014

## Characteristics of the external fabric FIBER 8 BOUCLE'

**Composition:** acoustic fibers 100% polyester. No detectable formaldehyde contents.

**Weight:** 460 (g/m<sup>2</sup>) - 667 (g/linear meter)

### REACTION TO FIRE

**Italian Class : Class1.** Test executed according to UNI 8456 and UNI 9174

**Euroclass: B-s1, d0.** Reaction to fire classification according to UNI EN 13501-1, executed following UNI EN ISO 11925-2 and UNI EN 13823

**French Class : ClassM1.** Test executed according to NF P 92-503 (1995) / NF P 92-504 (1995) and NF P 92-505 (1995)

Exyernal fabric is **Greenguard Gold certified**, validating its low VOC emission characteristics and its contribution to indoor environmental quality.

### ABRASION RESISTANCE OF FABRICS - MARTINDALE MACHINE METHOD

**25.000 rubs**

Test executed according to UNI EN ISO 12947-2:2000

### DETERMINATIONS OF FABRIC PROPENSITY TO SURFACE FUZZING AND TO PILLING

**CLASS 5 (5.000 rubs)**

Test executed according to UNI EN ISO 12945-2:2002

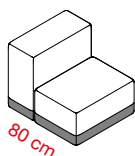
### COLOUR FASTNESS TO ARTIFICIAL LIGHT: Xenon arc fading lamp test (BLUE SCALE)

**FASTNESS INDEX: 6/7**

Test executed according to UNI EN ISO 105-B02:2014

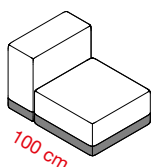
## ACOUSTIC PERFORMANCE

Measurement of sound absorption coefficient calculated according to ISO 354:2003, Frequency Hz / Aobj



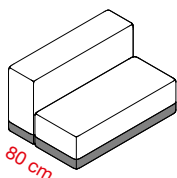
<b>cod. 7DCL9-F3</b>	125 Hz / Aobj <b>0,92</b> m <sup>2</sup>
<b>cod. 7DCL9A-F3</b>	250 Hz / Aobj <b>1,31</b> m <sup>2</sup>
Fiber 3 Melange	500 Hz / Aobj <b>2,01</b> m <sup>2</sup>
Textile cover	1000 Hz / Aobj <b>2,35</b> m <sup>2</sup>
	2000 Hz / Aobj <b>2,10</b> m <sup>2</sup>
	4000 Hz / Aobj <b>1,99</b> m <sup>2</sup>

<b>cod. 7DCL9-F8</b>	125 Hz / Aobj <b>0,81</b> m <sup>2</sup>
<b>cod. 7DCL9A-F8</b>	250 Hz / Aobj <b>1,25</b> m <sup>2</sup>
Fiber 8 Bouclè	500 Hz / Aobj <b>2,05</b> m <sup>2</sup>
Textile cover	1000 Hz / Aobj <b>2,18</b> m <sup>2</sup>
	2000 Hz / Aobj <b>2,16</b> m <sup>2</sup>
	4000 Hz / Aobj <b>2,06</b> m <sup>2</sup>



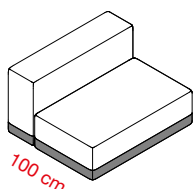
<b>cod. 7DCL1-F3</b>	125 Hz / Aobj <b>1,12</b> m <sup>2</sup>
<b>cod. 7DCL1A-F3</b>	250 Hz / Aobj <b>1,50</b> m <sup>2</sup>
Fiber 3 Melange	500 Hz / Aobj <b>2,24</b> m <sup>2</sup>
Textile cover	1000 Hz / Aobj <b>2,45</b> m <sup>2</sup>
	2000 Hz / Aobj <b>2,33</b> m <sup>2</sup>
	4000 Hz / Aobj <b>2,29</b> m <sup>2</sup>

<b>cod. 7DCL1-F8</b>	125 Hz / Aobj <b>1,09</b> m <sup>2</sup>
<b>cod. 7DCL1A-F8</b>	250 Hz / Aobj <b>1,55</b> m <sup>2</sup>
Fiber 8 Bouclè	500 Hz / Aobj <b>2,30</b> m <sup>2</sup>
Textile cover	1000 Hz / Aobj <b>2,48</b> m <sup>2</sup>
	2000 Hz / Aobj <b>2,37</b> m <sup>2</sup>
	4000 Hz / Aobj <b>2,26</b> m <sup>2</sup>



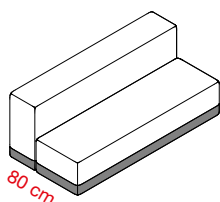
<b>cod. 7DCL10-F3</b>	125 Hz / Aobj <b>1,25</b> m <sup>2</sup>
<b>cod. 7DCL10A-F3</b>	250 Hz / Aobj <b>2,00</b> m <sup>2</sup>
Fiber 3 Melange	500 Hz / Aobj <b>2,73</b> m <sup>2</sup>
Textile cover	1000 Hz / Aobj <b>3,04</b> m <sup>2</sup>
	2000 Hz / Aobj <b>2,95</b> m <sup>2</sup>
	4000 Hz / Aobj <b>2,80</b> m <sup>2</sup>

<b>cod. 7DCL10-F8</b>	125 Hz / Aobj <b>1,35</b> m <sup>2</sup>
<b>cod. 7DCL10A-F8</b>	250 Hz / Aobj <b>2,06</b> m <sup>2</sup>
Fiber 8 Bouclè	500 Hz / Aobj <b>2,83</b> m <sup>2</sup>
Textile cover	1000 Hz / Aobj <b>3,17</b> m <sup>2</sup>
	2000 Hz / Aobj <b>3,01</b> m <sup>2</sup>
	4000 Hz / Aobj <b>2,90</b> m <sup>2</sup>



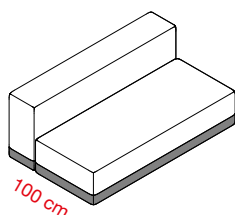
<b>cod. 7DCL2-F3</b>	125 Hz / Aobj <b>1,55</b> m <sup>2</sup>
<b>cod. 7DCL2A-F3</b>	250 Hz / Aobj <b>2,14</b> m <sup>2</sup>
Fiber 3 Melange	500 Hz / Aobj <b>3,10</b> m <sup>2</sup>
Textile cover	1000 Hz / Aobj <b>3,37</b> m <sup>2</sup>
	2000 Hz / Aobj <b>3,23</b> m <sup>2</sup>
	4000 Hz / Aobj <b>3,01</b> m <sup>2</sup>

<b>cod. 7DCL3-F8</b>	125 Hz / Aobj <b>1,65</b> m <sup>2</sup>
<b>cod. 7DCL3A-F8</b>	250 Hz / Aobj <b>2,35</b> m <sup>2</sup>
Fiber 8 Bouclè	500 Hz / Aobj <b>3,15</b> m <sup>2</sup>
Textile cover	1000 Hz / Aobj <b>3,48</b> m <sup>2</sup>
	2000 Hz / Aobj <b>3,33</b> m <sup>2</sup>
	4000 Hz / Aobj <b>3,11</b> m <sup>2</sup>



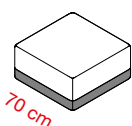
<b>cod. 7DCL11-F3</b>	125 Hz / Aobj <b>1,86</b> m <sup>2</sup>
<b>cod. 7DCL11A-F3</b>	250 Hz / Aobj <b>2,64</b> m <sup>2</sup>
Fiber 3 Melange	500 Hz / Aobj <b>3,73</b> m <sup>2</sup>
Textile cover	1000 Hz / Aobj <b>4,00</b> m <sup>2</sup>
	2000 Hz / Aobj <b>3,86</b> m <sup>2</sup>
	4000 Hz / Aobj <b>3,75</b> m <sup>2</sup>

<b>cod. 7DCL11-F8</b>	125 Hz / Aobj <b>1,95</b> m <sup>2</sup>
<b>cod. 7DCL11A-F8</b>	250 Hz / Aobj <b>2,70</b> m <sup>2</sup>
Fiber 8 Bouclè	500 Hz / Aobj <b>3,83</b> m <sup>2</sup>
Textile cover	1000 Hz / Aobj <b>4,07</b> m <sup>2</sup>
	2000 Hz / Aobj <b>3,96</b> m <sup>2</sup>
	4000 Hz / Aobj <b>3,84</b> m <sup>2</sup>



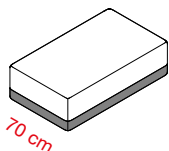
<b>cod. 7DCL3-F3</b>	125 Hz / Aobj <b>2,23</b> m <sup>2</sup>
<b>cod. 7DCL3A-F3</b>	250 Hz / Aobj <b>2,95</b> m <sup>2</sup>
Fiber 3 Melange	500 Hz / Aobj <b>4,04</b> m <sup>2</sup>
Textile cover	1000 Hz / Aobj <b>4,33</b> m <sup>2</sup>
	2000 Hz / Aobj <b>4,17</b> m <sup>2</sup>
	4000 Hz / Aobj <b>4,05</b> m <sup>2</sup>

<b>cod. 7DCL3-F8</b>	125 Hz / Aobj <b>2,33</b> m <sup>2</sup>
<b>cod. 7DCL3A-F8</b>	250 Hz / Aobj <b>3,04</b> m <sup>2</sup>
Fiber 8 Bouclè	500 Hz / Aobj <b>4,14</b> m <sup>2</sup>
Textile cover	1000 Hz / Aobj <b>4,43</b> m <sup>2</sup>
	2000 Hz / Aobj <b>4,26</b> m <sup>2</sup>
	4000 Hz / Aobj <b>4,13</b> m <sup>2</sup>



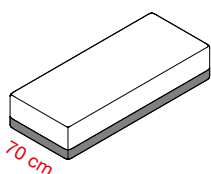
**cod. 7DCL4-F3** 125 Hz / Aobj **0,68** m<sup>2</sup>  
**cod. 7DCL4A-F3** 250 Hz / Aobj **0,87** m<sup>2</sup>  
 Fiber 3 Melange 500 Hz / Aobj **1,36** m<sup>2</sup>  
 Textile cover 1000 Hz / Aobj **1,58** m<sup>2</sup>  
 2000 Hz / Aobj **1,47** m<sup>2</sup>  
 4000 Hz / Aobj **1,38** m<sup>2</sup>

**cod. 7DCL4-F8** 125 Hz / Aobj **0,68** m<sup>2</sup>  
**cod. 7DCL4A-F8** 250 Hz / Aobj **0,91** m<sup>2</sup>  
 Fiber 8 Bouclè 500 Hz / Aobj **1,38** m<sup>2</sup>  
 Textile cover 1000 Hz / Aobj **1,60** m<sup>2</sup>  
 2000 Hz / Aobj **1,46** m<sup>2</sup>  
 4000 Hz / Aobj **1,35** m<sup>2</sup>



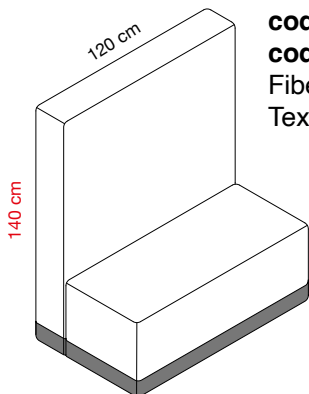
**cod. 7DCL5-F3** 125 Hz / Aobj **0,98** m<sup>2</sup>  
**cod. 7DCL5A-F3** 250 Hz / Aobj **1,17** m<sup>2</sup>  
 Fiber 3 Melange 500 Hz / Aobj **1,56** m<sup>2</sup>  
 Textile cover 1000 Hz / Aobj **1,74** m<sup>2</sup>  
 2000 Hz / Aobj **1,77** m<sup>2</sup>  
 4000 Hz / Aobj **1,58** m<sup>2</sup>

**cod. 7DCL5-F8** 125 Hz / Aobj **1,06** m<sup>2</sup>  
**cod. 7DCL5A-F8** 250 Hz / Aobj **1,38** m<sup>2</sup>  
 Fiber 8 Bouclè 500 Hz / Aobj **2,01** m<sup>2</sup>  
 Textile cover 1000 Hz / Aobj **2,27** m<sup>2</sup>  
 2000 Hz / Aobj **2,13** m<sup>2</sup>  
 4000 Hz / Aobj **2,10** m<sup>2</sup>



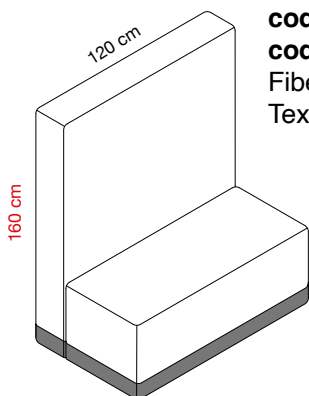
**cod. 7DCL6-F3** 125 Hz / Aobj **1,11** m<sup>2</sup>  
**cod. 7DCL6A-F3** 250 Hz / Aobj **1,98** m<sup>2</sup>  
 Fiber 3 Melange 500 Hz / Aobj **2,01** m<sup>2</sup>  
 Textile cover 1000 Hz / Aobj **2,98** m<sup>2</sup>  
 2000 Hz / Aobj **2,88** m<sup>2</sup>  
 4000 Hz / Aobj **2,90** m<sup>2</sup>

**cod. 7DCL6-F8** 125 Hz / Aobj **1,33** m<sup>2</sup>  
**cod. 7DCL6A-F8** 250 Hz / Aobj **1,92** m<sup>2</sup>  
 Fiber 8 Bouclè 500 Hz / Aobj **2,74** m<sup>2</sup>  
 Textile cover 1000 Hz / Aobj **3,01** m<sup>2</sup>  
 2000 Hz / Aobj **2,79** m<sup>2</sup>  
 4000 Hz / Aobj **2,71** m<sup>2</sup>



**cod. 7DCL13-F3** 125 Hz / Aobj **2,58** m<sup>2</sup>  
**cod. 7DCL13A-F3** 250 Hz / Aobj **3,39** m<sup>2</sup>  
 Fiber 3 Melange 500 Hz / Aobj **4,27** m<sup>2</sup>  
 Textile cover 1000 Hz / Aobj **4,61** m<sup>2</sup>  
 2000 Hz / Aobj **4,46** m<sup>2</sup>  
 4000 Hz / Aobj **4,33** m<sup>2</sup>

**cod. 7DCL13-F8** 125 Hz / Aobj **2,58** m<sup>2</sup>  
**cod. 7DCL13A-F8** 250 Hz / Aobj **3,39** m<sup>2</sup>  
 Fiber 8 Bouclè 500 Hz / Aobj **4,28** m<sup>2</sup>  
 Textile cover 1000 Hz / Aobj **4,63** m<sup>2</sup>  
 2000 Hz / Aobj **4,46** m<sup>2</sup>  
 4000 Hz / Aobj **4,33** m<sup>2</sup>



**cod. 7DCL16-F3** 125 Hz / Aobj **2,68** m<sup>2</sup>  
**cod. 7DCL16A-F3** 250 Hz / Aobj **3,49** m<sup>2</sup>  
 Fiber 3 Melange 500 Hz / Aobj **4,38** m<sup>2</sup>  
 Textile cover 1000 Hz / Aobj **4,73** m<sup>2</sup>  
 2000 Hz / Aobj **4,56** m<sup>2</sup>  
 4000 Hz / Aobj **4,43** m<sup>2</sup>

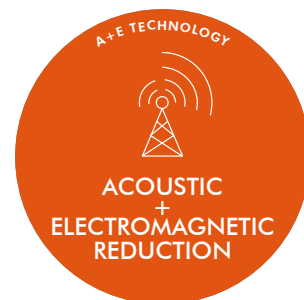
**cod. 7DCL16-F8** 125 Hz / Aobj **2,68** m<sup>2</sup>  
**cod. 7DCL16A-F8** 250 Hz / Aobj **3,49** m<sup>2</sup>  
 Fiber 8 Bouclè 500 Hz / Aobj **4,38** m<sup>2</sup>  
 Textile cover 1000 Hz / Aobj **4,73** m<sup>2</sup>  
 2000 Hz / Aobj **4,56** m<sup>2</sup>  
 4000 Hz / Aobj **4,43** m<sup>2</sup>

OPTIONAL

### A+E Technology , Electromagnetic reduction

The sofa is arranged to accommodate a layer of RF-reducing fabric inside if requested.

Inner cover consisting of a layer of radio frequency reducing fabric made of technopolymer metallised with pure silver capable of reducing radio frequencies without completely obstructing signals so that smartphones and Wi-Fi networks can continue to be used. The radio-frequency reducing fabric is inserted into the seats between the frame and the upholstery, making it possible to combine the functions of acoustic reverberation reduction and radio-frequency reduction. A new patented technology designed for people's well-being.



Available colours: Fiber 3 Melange:



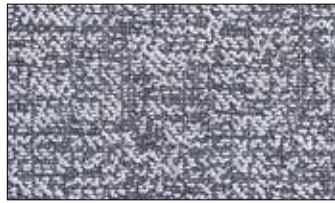


Available colours: Fiber 8 Bouclé

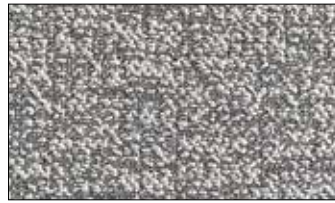
800



801



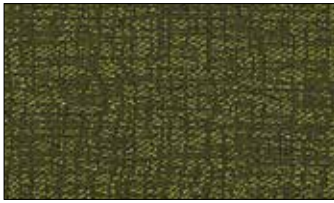
802



803



804



805



806



807



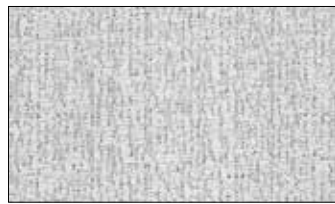
808



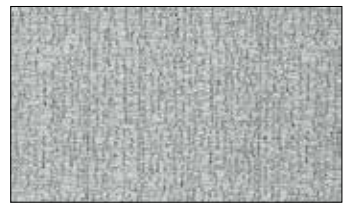
809



810



811



812



813



814



815



Caimi Brevetti S.p.A. reserves, by its unappealable judgment, the right to modify without prior notice the building materials, the technical and aesthetic specifications, as well as the dimensions of the products in this technical sheet, where pictures are purely as an indication.