

ACTIVE sit-stand desks



FEATURES

- Telescopic frame
- Equipped with two motors
- Column type – DOWN version
- Two types of lifting columns with anti-collision
- Three types of feet
- Two types of height adjustment buttons

QUALITY STANDARD

- EN 527-1:2011
- EN 527-2:2016

TECHNICAL INFORMATION

Desktop

- 25 mm MFC (melamine) with 2 mm ABS edging;
- With or without a cut-out for grommet and wire management;
- With or without a scallop for wire management.

Desk control button types

- JA – up and down drive; 2 memory positions;
- PA – up and down drive, 2 memory positions and screen that shows current height.



JA

PA

Types of feet



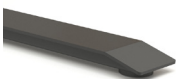
Type I

- Metal tube – 700x70x20 mm;
- Height levelling plastic feet (+10 mm);
- Powder coated metal, matches the colour of frame.



Type Q

- Metal sheet 700x80x31 mm with welded profile for stability;
- Height levelling plastic feet (+10 mm);
- Powder coated metal, matches the colour of frame.



Type Z

- Metal tube – 700x75x31 mm with welded profile for stability;
- Height levelling plastic feet (+10 mm);
- Powder coated metal, matches the colour of frame.

Adjustable telescopic frame

- Square steel pipe dimensions: 50x25x551 mm
- Side support steel L shape 62x20x520 mm
- Adjustment range - 600 mm;
- Steel pipe part for adjustment - 40x20x870 mm;
- Powder coated metal, matches the colour of columns and feet.

Lifting columns

- Types: two (2) or three (3) level columns;
- Anti-collision feature;
- Two motors;
- Soft start and soft stop;
- Lifting speed: up to 40 mm/ sec;
- Stroke length: 470 mm (two (2) level column) / 650 mm (three (3) level column);
- Rectangular tube dimensions: two (2) level column 50x70, 60x80 mm, three (3) level column 40x60, 50x70, 60x80 mm;
- Lifting capacity: 100 kg;
- Glide system solution prevents desk columns from possible paint scratches;
- Powder coated metal, matches the colour of frame and feet.



Two (2) level column



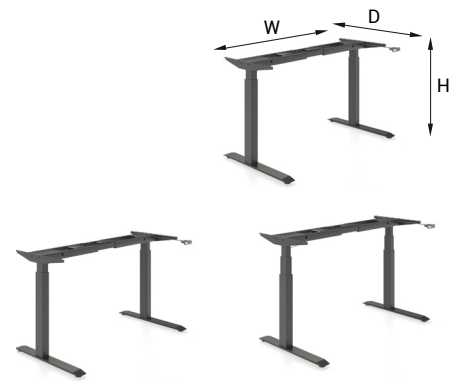
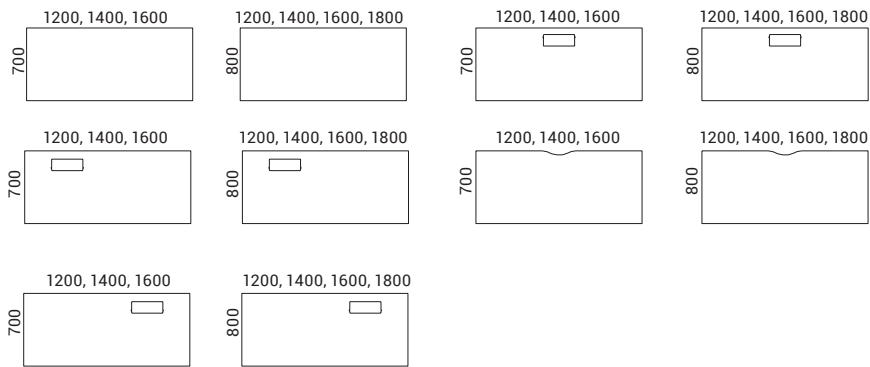
Three (3) level column

ELECTRICAL SPECIFICATION

Electronic data power unit

- Input: 110-240 V;
- Frequency: 50/60 Hz;
- Output: Button JA 29V, Button PA 35V
- Power Plug: 2-pol; EU, UK, CH, US;
- Energy consumption in standby mode: button JA 0,5W, button PA 0,2W;
- Operating Cycle: 1 minute on, 9 minutes off.

RANGE



W 1146/1346/1546/1746 W 1146/1346/1546/1746
 D 700 D 700
 H 698-1168 H 617-1267

Must be ordered

(for desktops with cut-out)



Metal grommet:
 317x119 mm, H=27 mm

Optional



Cable trays



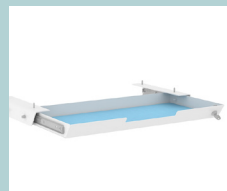
Power socket blocks



Cable ducts



Screens



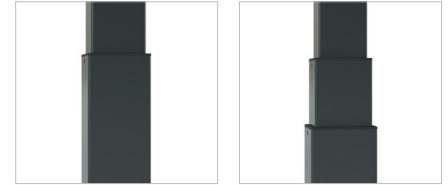
Felt-lined metal
 drawer with lock

ACTIVE



SIT-STAND DESK SYSTEM ACTIVE

OPERATION MANUAL



Two (2) level
column:
667-1137 mm

Three (3) level
column:
586-1236 mm

SAFETY AND WARNINGS

Inappropriate use of this product may cause property or bodily injury.

Check surroundings on all sides before using the desk. Do not place any objects taller than 540 mm (3 level columns) or 620 mm (2 level columns) under the desk or frame. If the desk has additional accessories, e. g. cable tray, evaluate if it fits before placing it on the desk.

Ensure the length of power cords are accounted for when operating the desk. Monitors, computers, speakers, anything with a cord that is not long enough for the desk's range of motion could be pulled down or have its wires broken. Check that no cables can get jammed.

Desks should not be used in environments with high humidity or dampness.

If you need to move the desk, DO NOT lift it only by holding the desktop. Lifting this way can stress the fasteners connecting the frame to the desktop.

Please provide this operation manual to any users, installers, or support personnel operating the product.

USAGE

The desk height is adjustable so the desktop can be fixed for most suitable user's position. These desks are designed only for ergonomic sit-stand position.

Do not move around, crawl or lie under the desk frame.

Do not sit or stand on the desk frame or desktop.

Any other use is at user's risk.

SETUP AND INSTALLATION

Choose a placement for the desk that is a safe distance from window frames, radiators, furniture etc.

Once the desk has been assembled, adjust the feet so that the desk is level and does not shift its position.

After this, connect the desk to the outlet and the desk is ready for use.

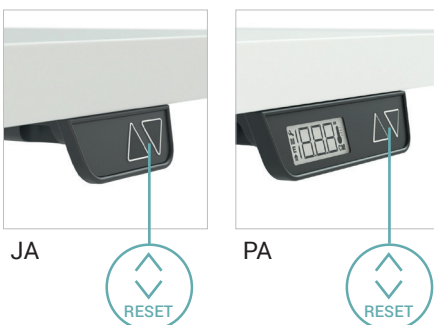
For the first start of desk please press and hold "down" button for control box activation.

MEMORY SETTINGS

If the software version in the handset is 4.20 or later it has an editable memory for high and low (stand and sit) position. It could also be used to avoid collision with i.e. a cabinet or pedestal. When a memory position is set the desk will stop when the memory position is reached. To drive the desk outside the memory position, press the up or down button for a minimum of 5 seconds.

How to set memory/end positions:

1. Drive your desk to the level you want to store.
2. Press both buttons 3 times (0,5-1 second between each pressing).
3. Then press "up" or "down" to set the position (0,5-1 second).
4. Do the same procedure for your second store.



JA

PA

TROUBLESHOOTING

If your desk does not function properly (does not go up or down; does not move at all) please do the RESET:

Button PA:

1. Simultaneously pressing the up and down buttons for minimum of 8 seconds.
2. Press and hold the down button and the desk will slowly move the lowest point possible.
3. The desk/stand is ready for normal use

Button JA:

1. Push both buttons for minimum 7 sec.
2. Drive the columns to lowest level.
3. Ready for use

If this does not work please contact your seller.

IMPORTANT

80
KG

Functional load of desk is 80 kg.
Do not exceed this given load.

1
MIN

! Please keep in mind that time for continuous desk movement upwards or downwards is 1 minute.

9
MIN

After 1 minute of unstopped operation there has to be a resting period of 9 minutes.

40
MM/S

Travel Speed Up to 40 mm/s.

TROUBLESHOOTING FOR ACTIVE, MOTION, EASY, ONE AND JAZZ SYSTEMS

Symptom	Check	Try
The desk does not run	Is the main connected to the control box?	Try to connect a lamp or similar to the main supply to check that the supply voltage is OK
	Are all plugs mounted correctly in the control box and to the leg? See assembly instruction	Check all connections
	Are there any visible damages on cables, controls, the control box or legs?	Damaged parts must be exchanged – contact Service
The desk stops and can only run in the opposite direction	Is the desk in fully extracted position?	When the desk has reached its upper position it can only run downwards
	Is there much load on the desk compared to when the desk functioned normally?	Remove some of the load and try again
The desk will only run downwards even though the desk is not overloaded		Perform RESET
The desk does not run with full stroke length upwards. Always stops at the same position		The system has set a new endstop outwards. Perform RESET to remove this stop
The desk does not run at all. No movement is observed	Defective handset or control box.	Check all connections. Check that there is voltage in the mains plug. Connect a handset that you know is OK. If it can run the handset is defective. If this does not help the control box is defective.
	Poor connection.	
	Mains cable fallen out. No voltage on the mains cable.	
Not all legs run when you run the desk downwards	The leg(s) that do not run are defective or the cable connection for the leg(s) are not OK	Change leg/cable, starting with the cable
The desk is in lower position and will not run up. You cannot see whether all legs are moving	The desk is overloaded	Remove some of the load on the desk
	One or more legs are defective or the cable connection between leg(s) and control box is not OK	Remove all motor cables from the control box. Mount one leg at a time in channel 1, perform RESET and hereafter run a bit upwards. If a leg will not run upwards after RESET it is defective. Try to exchange the motor cable before exchanging the leg.

RESET

A reset cycle should be made with an evenly distributed weight of approx. 45 kg (100 lbs.) applied on the desk.

Perform a reset:

Button PA:

1. Simultaneously pressing the up and down buttons for minimum of 8 seconds.
2. Press and hold the down button and the desk will slowly move the lowest point possible.
3. The desk/stand is ready for normal use

Button JA:

1. Push both buttons for minimum 7 sec.
2. Drive the columns to lowest level.
3. Ready for use.