

# PLANA

Executive Collection

narbutas



PLANA  
character



# LUCCI & PAMPANONI

Authors - Italian design masters  
**Roberto Lucci** and **Paolo Pampanoni**

'Straight lines, squared shapes, different thicknesses, warm, refined materials and finishings.'

PLANA IS A CLEAN, SELECTIVE COLLECTION.

An essential design approach that meets aesthetic and functional choices.'



PLANA –  
a modern,  
selective high-  
quality furniture  
collection.





# Outstanding character of PLANA

---

‘Professional, aesthetic and functional design solutions create a sense of luxury.’

- Squared shapes
- Combinations of different thicknesses
- Harmony of straight and curved lines
- Wide choice of textures and combinations
- Warm, refined materials and finishes
- Exceptional attention to details
- **Modern, clean design**

PLANA is created for those who appreciate modern luxury and high quality.



PLANA  
collection



# PLANA selective collection - range

---

A wide range allows to satisfy various demands offering different furniture combinations and creating a comfortable executive work space.

## **Types of furniture:**

1. EXECUTIVE TABLES (8 versions)
2. SUPPLEMENTARY UNIT
3. PEDESTALS (4 versions)
4. OPEN SHELF UNITS (3 versions)
5. STORAGE CABINETS (3 versions)
6. WARDROBE
7. MEETING TABLES (3 versions)





# Executive tables

- **Solid, 36/37 mm thick tabletop.** High quality wood veneer or impact-resistant melamine, combinations.
- 1800/2200 x 900 mm, height H = 750 mm.
- L/H (left) or R/H (right).
- **Elegant bended steel band legs** painted using the powder-coating technology or covered in chrome.
- Grommet with soft closing, metal frame and box for wire management.
- Option with fixed 900 mm length pedestal.
- Optional supplementary unit.



# Executive tables



**R/H (right)**

1800x900, H=750  
(BPA180)

2200x900, H=750  
(BPA220)



**L/H (left)**

1800x900, H=750  
(BPA181)

2200x900, H=750  
(BPA221)



**R/H (right) with  
modesty panel**

1800x900, H=750  
(BPA182)

2200x900, H=750  
(BPA222)



**L/H (left) with  
modesty panel**

1800x900, H=750  
(BPA183)

2200x900, H=750  
(BPA223)

# Executive tables with fixed pedestal



**R/H (right)**  
(as BPF900)

2040x1500, H=750  
(BPA200)

2440x1500, H=750  
(BPA240)



**L/H (left)**  
(as BPF901)

2040x1500, H=750  
(BPA201)

2440x1500, H=750  
(BPA241)



**R/H (right) with  
modesty panel**  
(as BPF900)

2040x1500, H=750  
(BPA202)

2440x1500, H=750  
(BPA242)



**L/H (left) with  
modesty panel**  
(as BPF901)

2040x1500, H=750  
(BPA203)

2440x1500, H=750  
(BPA243)



# Supplementary unit for executive table

---



## **Supplementary unit connected to the table top**

1400x800, H=750  
(BPD140)



Possibility to combine the unit with executive and meeting tables, affixed with plates to the longer edge of the table top.



# Pedestals

---

- High quality wood veneer or impact-resistant melamine, combinations.
- **Original design details - different door and back panel thickness combinations, lowered top panel.**
- L/H (left) or R/H (right).
- 900 x 600 mm pedestal with two drawers and a pull-out drawer for suitcase, handbag or computer case.
- 1200 x 600 mm pedestal with two drawers and height adjustable shelf with doors.
- **The inside of the top drawer is coated with black natural leather.**



# Pedestals



**Cabinet with a pull-out drawer on the left, two drawers on the right**

900x600, H=517  
(BPF900)



**Cabinet with a pull-out drawer on the right, two drawers on the left**

900x600, H=517  
(BPF901)



**1 adjustable shelf on the left, 2 drawers on the right**

1200x600, H=517  
(BPF120)



**1 adjustable shelf on the right, 2 drawers on the left**

1200x600, H=517  
(BPF121)



# Open shelf units

- High quality wood veneer or impact-resistant melamine, combinations.
- **Original design - combination of different panel thickness.**
- Solid 25 mm thick shelves.
- 18/19 mm thick back and vertical panels.
- 3 height levels - 2H / 3H / 5H.
- Dimensions: 900 x 400 mm, H = 814 / 1190 / 1942 mm.

# Open shelf units



**2 level unit (2H)**

900x400, H=814  
(BPE090)



**3 level unit (3H)**

900x400, H=1190  
(BPE091)



**5 level unit (5H)**

900x400, H=1942  
(BPE092)





# Storage cabinets

- High quality wood veneer or impact-resistant melamine, combinations.
- **Original design - different door thickness and lowered top panel.**
- 3 height levels - 2H / 3H / 5H.
- Solid 25 mm thick shelves.
- Hinged doors with no handles.
- Dimensions: 900 x 400 mm,  
H = 814 / 1190 / 1942 mm.
- **The wardrobe for clothes and accessories is also available.**



# Storage cabinets



**2 level cabinet  
(2H, 1 shelf)**

900x400, H=814  
(BPE093)



**3 level cabinet  
(3H, 2 shelves)**

900x400, H=1190  
(BPE094)



**5 level cabinet  
(5H, 4 shelves)**

900x400, H=1942  
(BPE095)



**Wardrobe  
(metal pull-out hanging  
rail and one shelf on the  
left, 4 shelves on the right)**

900x400, H=1942  
(BPE096)



# Meeting tables

---

- **Solid, 36/37 mm thick tabletop.** High quality wood veneer or impact-resistant melamine, combinations.
- **Elegant three-part bended steel band legs** painted using the powder-coating technology or covered in chrome.
- Grommet with soft closing, metal frame and box for wire management (except round table).

# Meeting / conference tables



## 8 places

2400 x 1200 mm,  
H = 750 mm  
(CPM240)



## 14 places

4200 x 1200 mm,  
H = 750 mm  
(CPM420)



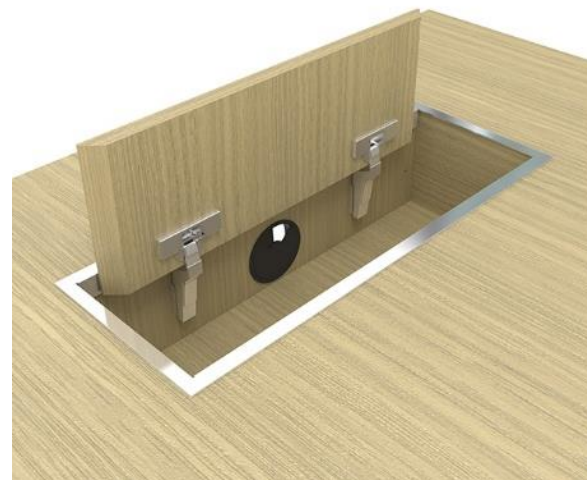
## Round, 3 places

Diameter  $\varnothing$  = 1200 mm,  
H = 750 mm  
(CPM120)

# Details / accents



The inside of the top drawer is coated with black **natural leather**.



**Grommet with soft closing**, metal frame and box for wire management.



**Different panel thickness combinations**, lowered top panel.



**Bended steel legs** – chromed or powder coated.



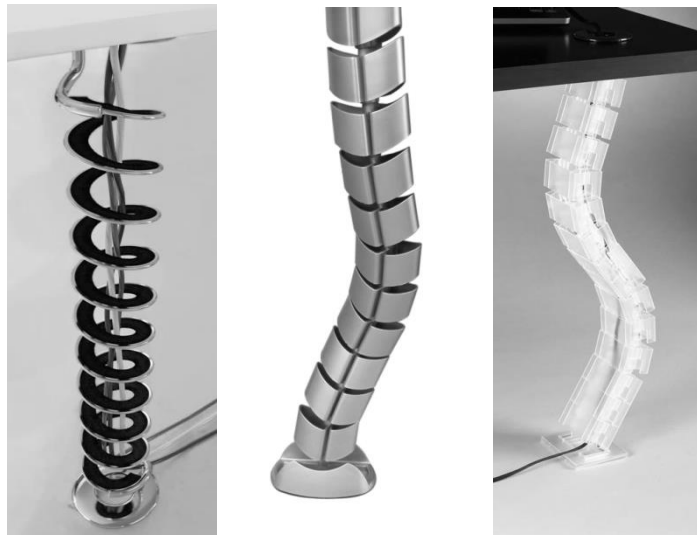
# Accessories



3 types of **power socket blocks**



3 types of **vertical cable ducts**



**Leather table mats**

Natural leather  
(D81, D86, D87, D88)





# PLANA

materials and textures

# Textures

---



Special for PLANA we use **2 exclusive textures**:



**Natural Oak**

(wood veneer panels)



**Deep Bronze**

(metal coating)



# Textures and combinations

## Natural wood veneer



A - oak

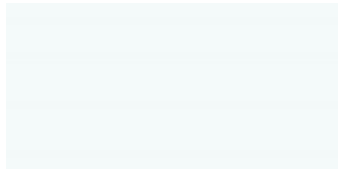


R - walnut



V1 - ash

## Melamine



M1 - white



N1 - dark grey



U - walnut



D1 - whitened oak

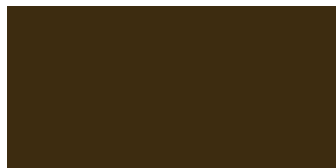
## Metal



E - white



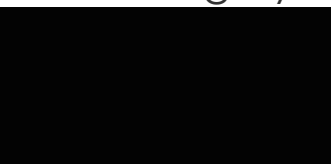
T1 - dark grey



S1 - deep bronze



H - chrome



A - black



M - metallic

## Natural wood veneer / melamine combinations



AAM1



AAN1



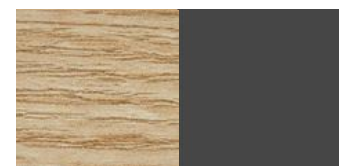
RRM1



RRN1



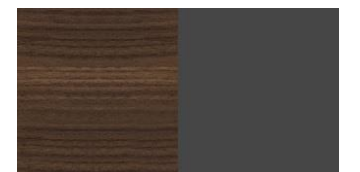
D1M1



D1N1



UUM1



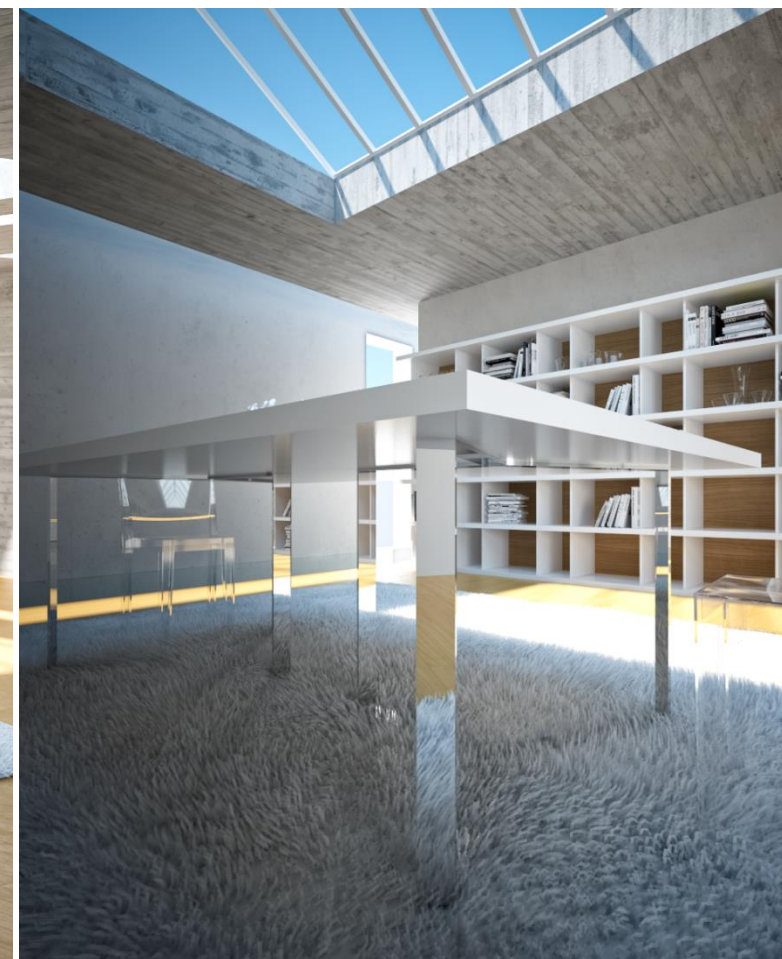
UUN1





PLANA  
in the interiors

# Plana



walnut veneer | white melamine | chrome



# Plana



walnut veneer | white melamine | chrome | dark grey

# Plana



oak veneer | chrome



# Plana



whitened oak melamine | chrome



# PLANA

The values of modern  
luxury and quality.

narbutas



