

NOVA Wood Multipurpose

Technical information



Quality standard

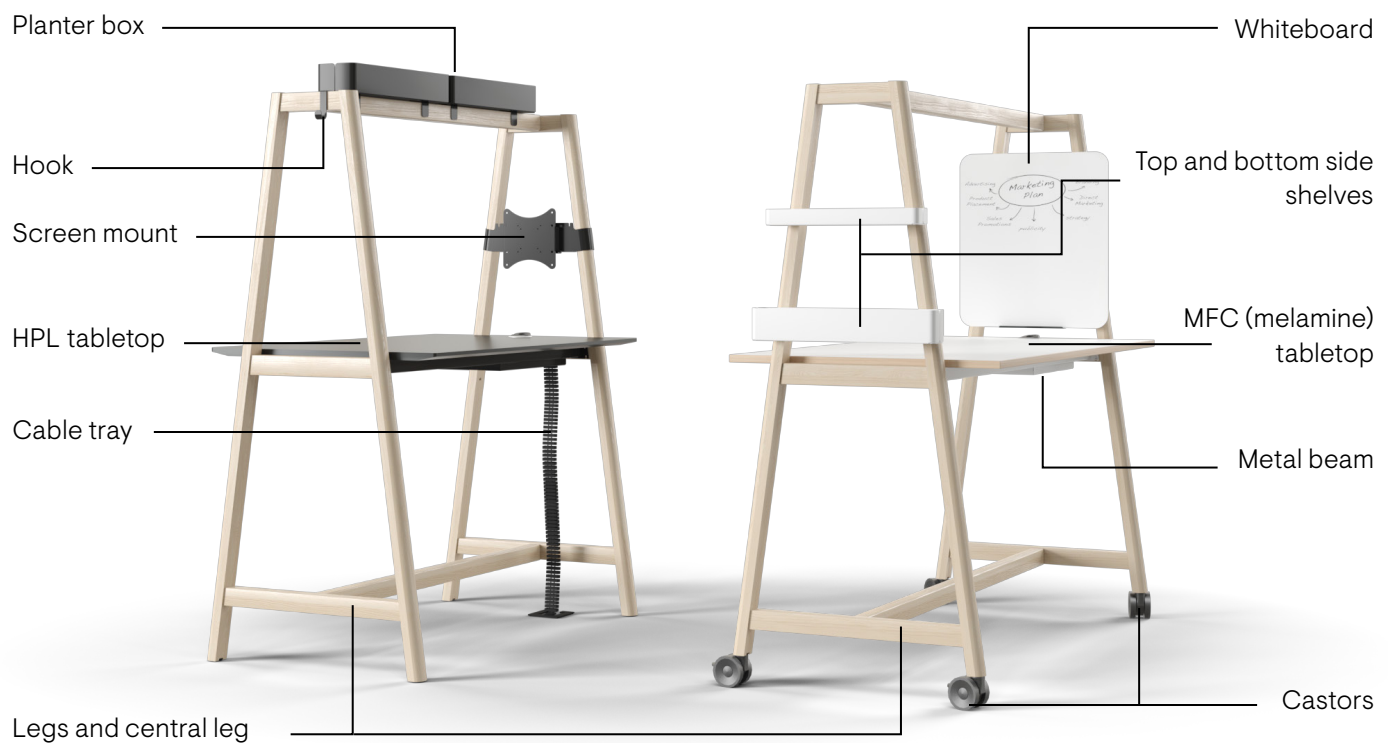
EN 1730:2012

EN 15372:2016

Other documents available for this product

Cable management guidelines for NOVA Wood Multipurpose conference and meeting tables

NARBUTAS product care guide



Technical information

Types

- Conference & Meeting tables (1)
- High tables (2)

1



2



MFC (melamine) tabletop

- 25 mm with 2 mm ABS edging;
- The corners of desktop are rounded: R2 mm;
- 1,5 mm gap between the legs and the desktop.

HPL tabletop

- 26 mm MDF covered in HPL with sloping painted edges;
- Slopping painted edges: white or black colour;
- The corners of desktop are rounded: R10 mm;
- 1,5 mm gap between the legs and the desktop.

Metal beam

- Metal tube;
- With welded metal plates for leg fixing;
- Powder coated metal.

Legs and central leg

- Lacquered and stained natural ash solid wood;
- Glued wood construction;
- With metal inserts for fixing;
- Plastic feet with height levelling (+10 mm).

Castors

- Four swivel castors, Ø100 mm;
- With wheel brakes;
- Rotate in all directions;
- Max load capacity: 100 kg per castor.
- Make sure that before relocating your table with castors, all electrical components are disconnected from the main power source and stacked into a cable tray.

Accessories (optional)

Top and bottom side shelves (1)

- Powder coated metal;
- Different shelves are designed for two heights: 1100 mm; 1456 mm (from the ground);
- Can be easily removed or placed on different leg without any tools;
- Max load capacity: 10 kg per shelf.

Planter box (2)

- Powder coated metal;
- Can be easily removed or placed to a different position without any tools;
- Hang only on the top table crossbar;
- Not suitable for direct planting;
- Max load capacity: 10 kg per box.

Cable tray (3)

- Dimensions: 480x367, H=68 mm;
- Matches the colour of frame;
- Powder coated metal.

Screen mount (4)

- Powder coated metal;
- Suitable for TV and whiteboard;
- Can be easily removed or placed on different leg without any tools;
- Can be placed only in one height (monitor / whiteboard centre measured from the floor): 1420 mm;
- Hanging support is made from bent metal sheet - 482x116x51 mm
- The plate for the monitor is made from a bent metal sheet - 230x230x32 mm;
- VESA standard - 75x75 mm, 100x100 mm, 200x100 mm, 200x200 mm;
- Recommended screen up to 48"- 49" (maximum screen height 64 cm), weight up to 12 kg;
- Screws for screen fixing to VESA plate are NOT INCLUDED.

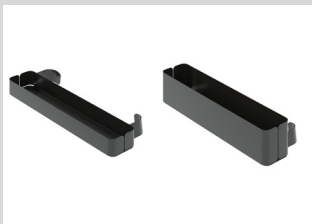
Whiteboard (5)

- 14 mm MDF covered in HPL with sloping painted edges;
- Can be easily removed or placed on different sides of legs.

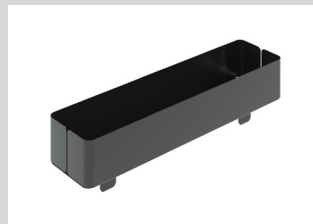
Hook (6)

- Powder coated metal;
- Hang only on the top table crossbar;
- Max load capacity: 3 kg per hook.

1



2



3



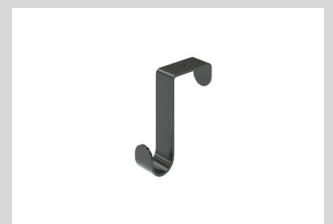
4



5

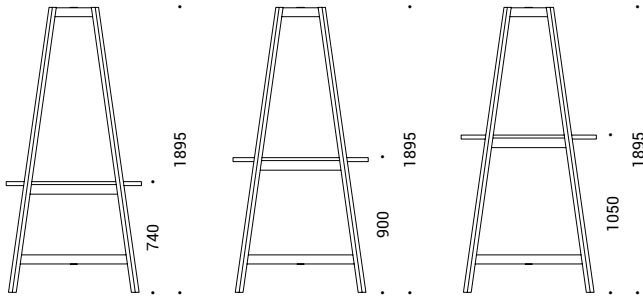


6

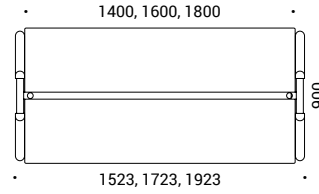


RANGE

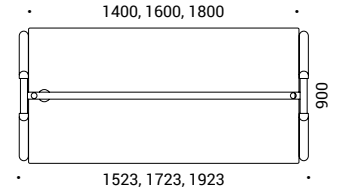
Multipurpose tables



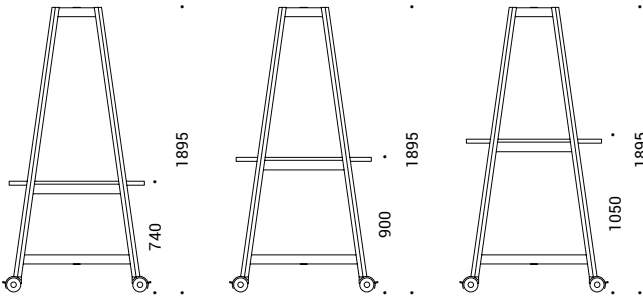
Tabletop



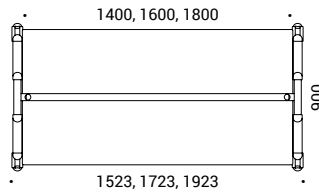
Tabletop with cut out for power socket



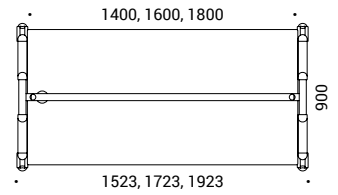
Multipurpose tables with castors



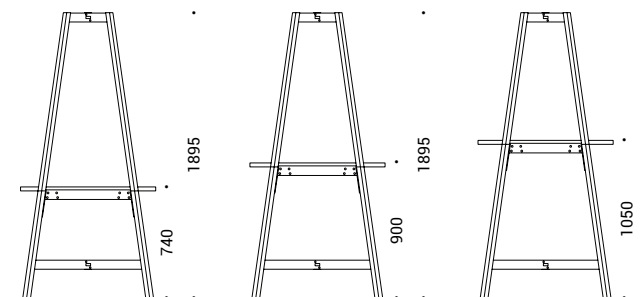
Tabletop



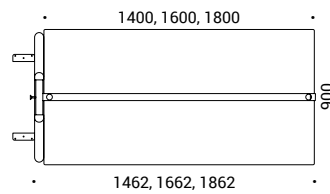
Tabletop with cut out for power socket



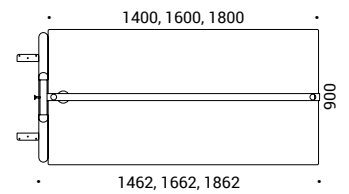
Multipurpose table extensions (not possible with castors)



Tabletop

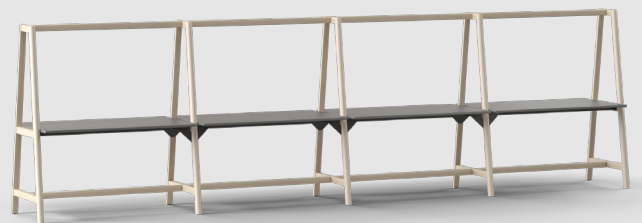
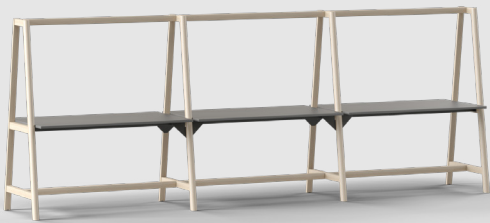


Tabletop with cut out for power socket



Additional information

- Two types of tabletops are available for the NOVA WOOD Multipurpose tables: HPL with sloping painted edges and Melamine with ABS 2mm straight edges.
- MDF tabletops covered in HPL with sloping raw (painted) edges are especially sensitive to contact with hard surfaces like metal or wood, thus require extra caution when used with hard seating furniture.
- If you want to increase the number of workplaces, you can use max 2 supplementary units in one combination.



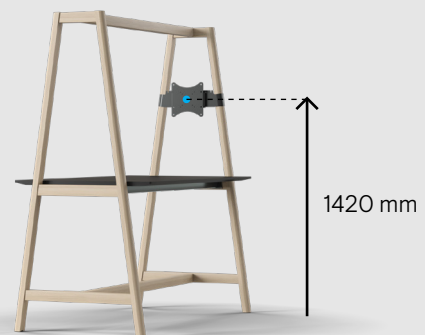
- It is possible to hang two shelves and screen mount on the same table leg and on different sides of legs.

- Table extension is possible only with tables of the same height.



- Easy way to place and remove shelves and screen mount.

- The height from the center of the VESA plate to the ground is 1420 mm.



- For more information about electrical components installation, please see cable management guidelines.