

SPECIFICATION

Range: **SNOWGEMS**

Design: **Annalisa Dominoni, Benedetto Quaquaro**

“Snowsound Technology” sound-absorbing wall element.

Panel description:

Both faces with convex section 36 mm thick, consisting of an internal padding in variable density polyester fiber. The density decreases moving towards the heart of the panel, which is covered on both sides with Trevira CS® polyester fabric, solidly applied to the padding. The panel is double sided, with same characteristics on both sides. It is characterized by the rigid edge obtained by the manufacturing process itself, without any supporting and/or stiffening frame.

The panels are equipped with a through-hole for the insertion of the tubular frame and are each completed with chrome-plated zamak shaped ferrules. The 50x50 cm and 36x57.5 cm panels can rotate on their own axis.

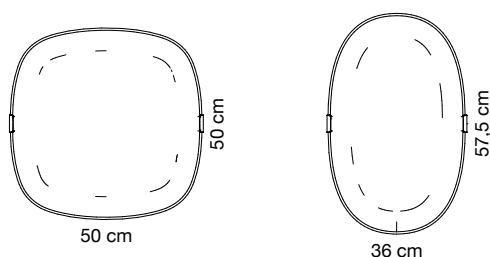
The panel has **Euroclass B-s2, d0** fire reaction

The panel is **Greenguard Gold** certified, which validates its low VOC emission and its contribution to the quality of the indoor environment.

The panel is **100% recyclable** and has no detectable formaldehyde content according to UNI EN 717-2. It does not contain felts or other organic materials that are hardly recyclable.

The panel has been tested in reverberation chamber according to UNI EN ISO 354 and obtained “**Acoustic Absorption Class A**”, in accordance with UNI EN ISO 11654.

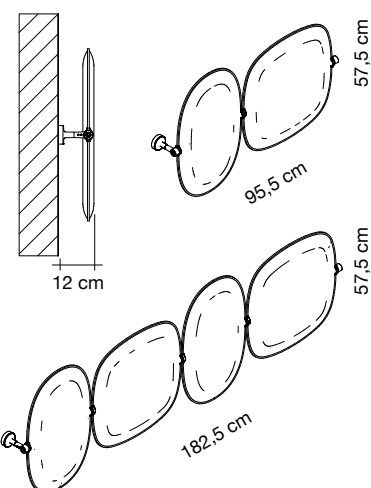
Panels dimensions:



Structure description:

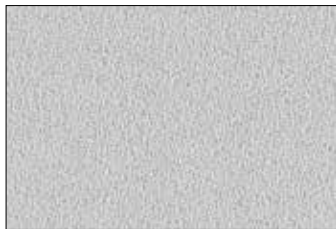
Structure consisting of a \varnothing 20 mm galvanised steel tube fitted with threaded sleeves at the ends to which two wall-mounting brackets are attached by means of an M8x30 screw.

The supports each consist of: a chrome-plated zamak ring nut with holes for wall mounting; a chrome-plated zamak closing/connecting element with threaded end; a nickel-plated steel conical pin and a chrome-plated zamak connecting element. This element allows, by means of the conical pin, the wall support to be joined to the panel support tube. The whole is made integral by the insertion of M4x6 grub screws.



Available colors:

8002



Cool white

8007



Dark grey

4067



Aquamarine

7074



Rose quartz



Caimi Brevetti S.p.A. reserves, by its unappealable judgment, the right to modify without prior notice the building materials, the technical and aesthetic specifications, as well as the dimensions of the products in this technical sheet, where pictures are purely as an indication.

SPECIFICATION

Range: **SNOWGEMS**

Design: **Annalisa Dominoni, Benedetto Quaquaro**

“Snowsound Technology” sound-absorbing element suspended from the ceiling with cables.

Panel description:

Both faces with convex section 36 mm thick, consisting of an internal padding in variable density polyester fiber. The density decreases moving towards the heart of the panel, which is covered on both sides with Trevira CS® polyester fabric, solidly applied to the padding. The panel is double sided, with same characteristics on both sides. It is characterized by the rigid edge obtained by the manufacturing process itself, without any supporting and/or stiffening frame.

The panels are equipped with a through-hole for the insertion of the tubular frame and are each completed with chrome-plated zamak shaped ferrules. The 50x50 cm and 36x57.5 cm panels can rotate on their own axis.

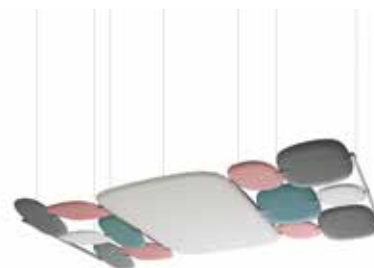
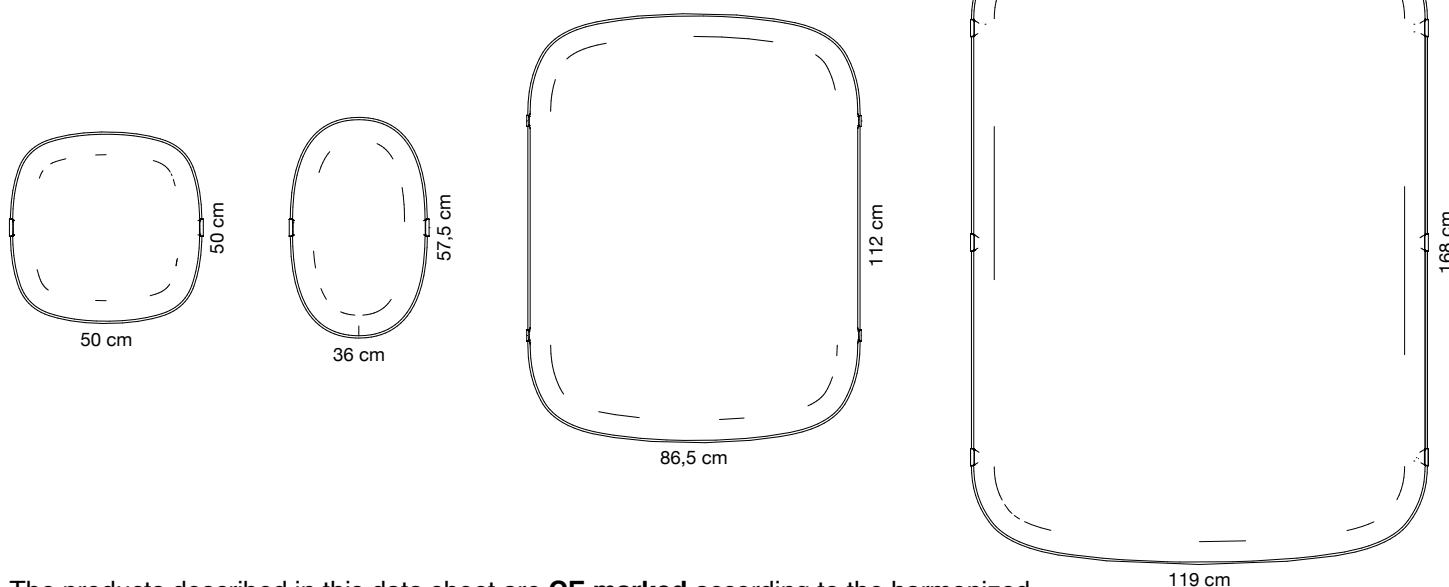
The panel has **Euroclass B-s2, d0** fire reaction.

The panel is **Greenguard Gold** certified, which validates its low VOC emission and its contribution to the quality of the indoor environment.

The panel is **100% recyclable** and has no detectable formaldehyde content according to UNI EN 717-2. It does not contain felts or other organic materials that are hardly recyclable.

The panel has been tested in reverberation chamber according to UNI EN ISO 354 and obtained “**Acoustic Absorption Class A**”, in accordance with UNI EN ISO 11654.

Panels dimensions:

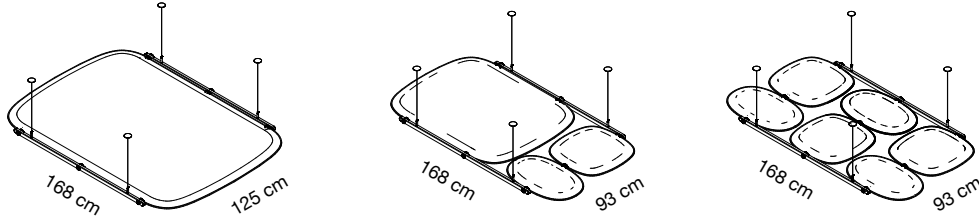


The products described in this data sheet are **CE marked** according to the harmonized product standard EN 13964 for the intended use as a drop ceiling.

Description structure base modules equipped with 1/3/6 panels:

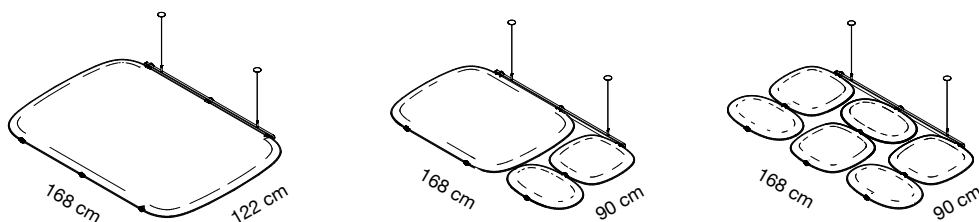
Steel structure consisting of 20x30 mm rectangular-section tubular steel uprights with rounded edges and rounded, closed ends by bending and welding.

The uprights have 3 through-holes for fixing the tubulars to the panels. Tubulars are attached to the uprights by means of chrome-plated zamak washers and rings and M8x40 screws. At the top, the uprights are fitted with two threaded sleeves to which \varnothing 10 mm cylindrical elements are attached that allow the cables to be adjusted in height to the millimetre by means of a pressure system with safety lock. Connection to the ceiling is by means of four \varnothing 1.5 mm steel cables and four \varnothing 40 mm chrome-plated steel circular plates with two holes for the ceiling anchor screws.



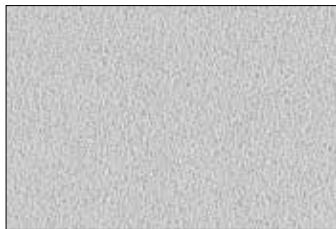
Description of structure for add-on modules equipped with 1/3/6 panels:

Steel structure for add-on modules consisting of a tubular upright with a 20x30 mm rectangular cross-section with rounded edges and rounded ends closed by bending and welding. The upright has 3 through-holes for fastening the tubulars to the panels. Tubulars are attached to the initial/end upright by means of chrome-plated zamak washers and rings and an M8x40 screw; they are attached to the intermediate uprights by means of M8x50 steel grub screws that connect the tubulars in sequence. At the top, the uprights are fitted with two threaded sleeves to which \varnothing 10 mm cylindrical elements are attached that allow the cables to be adjusted in height to the millimetre by means of a pressure system with safety lock. The attachment to the ceiling is by means of four \varnothing 1.5 mm steel cables and four \varnothing 40 mm chrome-plated steel circular plates with two holes for the ceiling anchor screws.



Available colors:

8002



Cool white

8007



Dark grey

4067



Aquamarine

7074



Rose quartz



Caimi Brevetti S.p.A. reserves, by its unappealable judgment, the right to modify without prior notice the building materials, the technical and aesthetic specifications, as well as the dimensions of the products in this technical sheet, where pictures are purely as an indication.